

Datasheet for ABIN2787408  
**anti-LUC7L antibody (Middle Region)**[Go to Product page](#)

## 2 Images

## Overview

Quantity:	100 µL
Target:	LUC7L
Binding Specificity:	Middle Region
Reactivity:	Human, Mouse, Rat, Cow, Dog, Guinea Pig, Horse, Rabbit, Zebrafish (Danio rerio)
Host:	Rabbit
Clonality:	Polyclonal
Conjugate:	This LUC7L antibody is un-conjugated
Application:	Western Blotting (WB)

## Product Details

Immunogen:	The immunogen is a synthetic peptide directed towards the middle region of human LUC7L
Sequence:	EEIGKLLAKA EQLGAEGNVD ESQKILMEVE KVRAKKKEAE EEYRNSMPAS
Predicted Reactivity:	Cow: 100%, Dog: 100%, Guinea Pig: 100%, Horse: 100%, Human: 100%, Mouse: 100%, Rabbit: 100%, Rat: 100%, Zebrafish: 92%
Characteristics:	This is a rabbit polyclonal antibody against LUC7L. It was validated on Western Blot.
Purification:	Affinity Purified

## Target Details

Target:	LUC7L
Alternative Name:	LUC7L ( <a href="#">LUC7L Products</a> )

## Target Details

Background:	<p>The LUC7L gene may represent a mammalian heterochromatic gene, encoding a putative RNA-binding protein similar to the yeast Luc7p subunit of the U1 snRNP splicing complex that is normally required for 5-prime splice site selection (Tufarelli et al., 2001 [PubMed 11170747]).</p> <p>Alias Symbols: FLJ10231, LUC7-LIKE, LUC7B1, Luc7, SR+89, hLuc7B1</p> <p>Protein Interaction Partner: UBC, SUZ12, PRMT5, SRPK3, SRPK2, SRPK1, CLK2, FBXO25, CTNNBL1, LUC7L, CHERP, PRDX1, BARD1, TCERG1, GADD45G, CALM1, TADA2A, USP50, FAM173A, RNPS1, NFKBIL1,</p> <p>Protein Size: 325</p>
Molecular Weight:	36 kDa
Gene ID:	55692
NCBI Accession:	<a href="#">NM_018032</a> , <a href="#">NP_060502</a>
UniProt:	<a href="#">Q1W6G4</a>
Pathways:	<a href="#">Ribonucleoprotein Complex Subunit Organization</a>

## Application Details

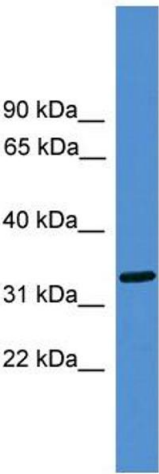
Application Notes:	Optimal working dilutions should be determined experimentally by the investigator.
Comment:	Antigen size: 325 AA
Restrictions:	For Research Use only

## Handling

Format:	Liquid
Concentration:	Lot specific
Buffer:	Liquid. Purified antibody supplied in 1x PBS buffer with 0.09 % (w/v) sodium azide and 2 % sucrose.
Preservative:	Sodium azide
Precaution of Use:	This product contains Sodium azide: a POISONOUS AND HAZARDOUS SUBSTANCE which should be handled by trained staff only.
Handling Advice:	Avoid repeated freeze-thaw cycles.
Storage:	-20 °C
Storage Comment:	For short term use, store at 2-8°C up to 1 week. For long term storage, store at -20°C in small

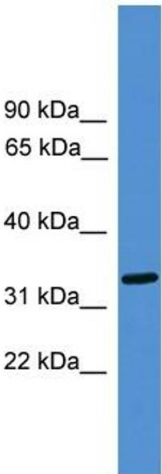
aliquots to prevent freeze-thaw cycles.

Images



**Western Blotting**

**Image 1. WB Suggested Anti-LUC7L Antibody Titration:**  
0.2-1 ug/ml  
**ELISA Titer:** 1:312500  
**Positive Control:** Human Placenta



Rabbit Anti-LUC7L Antibody  
Catalog Number: ARP57816  
Lot Number: QC30006  
Lane: Placenta Lysate

Antibody Titration: 1.0µg/ml  
Gel Concentration: 12%

**Western Blotting**

**Image 2. WB Suggested Anti-LUC7L**  
Antibody Titration: 0.2-1 µg/mL ELISA Titer: 1:12500  
Positive Control: Human Placenta