

Datasheet for ABIN2787416
anti-PRKACA antibody (N-Term)



[Go to Product page](#)

2 Images

Overview

Quantity:	100 µL
Target:	PRKACA
Binding Specificity:	N-Term
Reactivity:	Human, Mouse, Rat, Dog, Cow, Sheep, Pig, Guinea Pig, Horse, Rabbit, Zebrafish (Danio rerio)
Host:	Rabbit
Clonality:	Polyclonal
Conjugate:	This PRKACA antibody is un-conjugated
Application:	Western Blotting (WB), Immunohistochemistry (IHC)

Product Details

Immunogen:	The immunogen is a synthetic peptide directed towards the N terminal region of human PRKACA
Sequence:	MASNSSDVKE FLAKAKEDFL KKWESPAQNT AHLDQFERIK TLGTGSFGRV
Predicted Reactivity:	Cow: 100%, Dog: 100%, Guinea Pig: 93%, Horse: 100%, Human: 100%, Mouse: 93%, Pig: 100%, Rabbit: 100%, Rat: 93%, Sheep: 100%, Zebrafish: 86%
Characteristics:	This is a rabbit polyclonal antibody against PRKACA. It was validated on Western Blot using a cell lysate as a positive control.
Purification:	Affinity Purified

Target Details

Target:	PRKACA
---------	--------

Target Details

Alternative Name:	PRKACA (PRKACA Products)
Background:	<p>cAMP is a signaling molecule important for a variety of cellular functions. cAMP exerts its effects by activating the cAMP-dependent protein kinase, which transduces the signal through phosphorylation of different target proteins. The inactive kinase holoenzyme is a tetramer composed of two regulatory and two catalytic subunits. cAMP causes the dissociation of the inactive holoenzyme into a dimer of regulatory subunits bound to four cAMP and two free monomeric catalytic subunits. Four different regulatory subunits and three catalytic subunits have been identified in humans. The protein encoded by this gene is a member of the Ser/Thr protein kinase family and is a catalytic subunit of cAMP-dependent protein kinase. Alternatively spliced transcript variants encoding distinct isoforms have been observed.</p> <p>Alias Symbols: MGC102831, MGC48865, PKACA</p> <p>Protein Interaction Partner: MAPT, UBC, PALM2-AKAP2, NASP, MARCKS, CALU, CALR, TRMT10A, ARPC5L, AARSD1, UGDH, TPD52, SH3GL1, RPA2, SH3GLB1, UBQLN2, ARPC1A, ARPC2, ARPC3, ARPC5, smo, CYP3A4, GNA13, DYRK1B, TBXA2R, ITGA2B, GSK3B, PDE4D, EGFR, CALD1, BAD, HSP90AB1, HSP90AA1, C2orf88, CD</p> <p>Protein Size: 343</p>
Molecular Weight:	40 kDa
Gene ID:	5566
NCBI Accession:	NM_207518 , NP_997401
UniProt:	A8K8B9
Pathways:	NF-kappaB Signaling , Hedgehog Signaling , EGFR Signaling Pathway , Neurotrophin Signaling Pathway , Thyroid Hormone Synthesis , Carbohydrate Homeostasis , Myometrial Relaxation and Contraction , M Phase , G-protein mediated Events , Signaling Events mediated by VEGFR1 and VEGFR2 , Interaction of EGFR with phospholipase C-gamma , Thromboxane A2 Receptor Signaling , VEGFR1 Specific Signals , Lipid Metabolism , SARS-CoV-2 Protein Interactome , The Global Phosphorylation Landscape of SARS-CoV-2 Infection

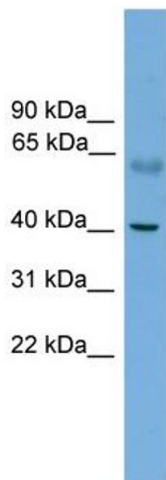
Application Details

Application Notes:	Optimal working dilutions should be determined experimentally by the investigator.
Comment:	Antigen size: 343 AA
Restrictions:	For Research Use only

Handling

Format:	Liquid
Concentration:	Lot specific
Buffer:	Liquid. Purified antibody supplied in 1x PBS buffer with 0.09 % (w/v) sodium azide and 2 % sucrose.
Preservative:	Sodium azide
Precaution of Use:	This product contains Sodium azide: a POISONOUS AND HAZARDOUS SUBSTANCE which should be handled by trained staff only.
Handling Advice:	Avoid repeated freeze-thaw cycles.
Storage:	-20 °C
Storage Comment:	For short term use, store at 2-8°C up to 1 week. For long term storage, store at -20°C in small aliquots to prevent freeze-thaw cycles.

Images

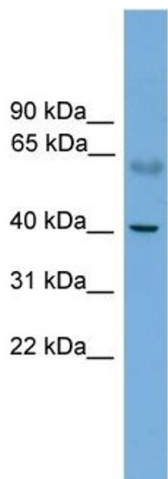


Western Blotting

Image 1. WB Suggested Anti-PRKACA Antibody Titration:

0.2-1 ug/ml

Positive Control: Human Muscle



Rabbit Anti-PRKACA Antibody
Catalog Number: ARP57828
Lot Number: QC29000
Lane: Fetal Muscle Lysate

Antibody Titration: 1.0µg/ml
Gel Concentration: 12%

Western Blotting

Image 2. WB Suggested Anti-PRKACA

Antibody Titration: 0.2-1 µg/mL

Positive Control: Human Muscle