

Datasheet for ABIN2787424
anti-SPDYE1 antibody (C-Term)[Go to Product page](#)

1 Image

Overview

Quantity:	100 µL
Target:	SPDYE1
Binding Specificity:	C-Term
Reactivity:	Human, Mouse, Rabbit, Rat
Host:	Rabbit
Clonality:	Polyclonal
Conjugate:	This SPDYE1 antibody is un-conjugated
Application:	Western Blotting (WB)

Product Details

Immunogen:	The immunogen is a synthetic peptide directed towards the C-terminal region of Human SPDYE1
Sequence:	RCMNPRARKN RSQIVLFQKR RFHFFCSMSC RAWVSPEELE EIQAYDPEHW
Predicted Reactivity:	Human: 100%, Mouse: 92%, Rabbit: 92%, Rat: 92%
Characteristics:	This is a rabbit polyclonal antibody against SPDYE1. It was validated on Western Blot.
Purification:	Affinity Purified

Target Details

Target:	SPDYE1
Alternative Name:	SPDYE1 (SPDYE1 Products)

Target Details

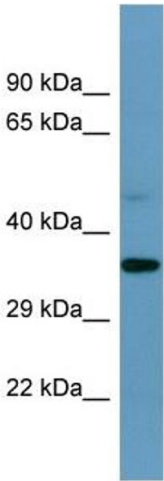
Background:	This gene is located at chromosome 7p13 which is close to the Williams Beuren syndrome chromosome region 7q11.23. Alias Symbols: Ringo1, SPDYE, WBSCR19 Protein Size: 336
Molecular Weight:	36 kDa
Gene ID:	285955
NCBI Accession:	NM_175064 , NP_778234
UniProt:	Q8NFV5

Application Details

Application Notes:	Optimal working dilution should be determined by the investigator.
Restrictions:	For Research Use only

Handling

Format:	Liquid
Concentration:	1 mg/mL
Buffer:	Liquid. Purified antibody supplied in 1x PBS buffer with 0.09 % (w/v) sodium azide and 2 % sucrose.
Preservative:	Sodium azide
Precaution of Use:	This product contains Sodium azide: a POISONOUS AND HAZARDOUS SUBSTANCE which should be handled by trained staff only.
Handling Advice:	Avoid repeat freeze-thaw cycles.
Storage:	-20 °C
Storage Comment:	For short term use, store at 2-8°C up to 1 week. For long term storage, store at -20°C in small aliquots to prevent freeze-thaw cycles.



Western Blotting

Image 1.