



[Go to Product page](#)

Datasheet for ABIN2787430
anti-ELF2 antibody (Middle Region)

1 Image

Overview

Quantity:	100 µL
Target:	ELF2
Binding Specificity:	Middle Region
Reactivity:	Human, Mouse, Rat, Dog, Cow, Guinea Pig, Horse, Rabbit, Zebrafish (Danio rerio)
Host:	Rabbit
Clonality:	Polyclonal
Conjugate:	This ELF2 antibody is un-conjugated
Application:	Western Blotting (WB)

Product Details

Immunogen:	The immunogen is a synthetic peptide directed towards the middle region of Rat Elf2
Sequence:	TCPRYIKWTQ REKGIFKLVD SKAVSKLWVGK HKNKPDMNYE TMGRALRYYY
Predicted Reactivity:	Cow: 100%, Dog: 100%, Guinea Pig: 100%, Horse: 100%, Human: 100%, Mouse: 100%, Rabbit: 100%, Rat: 100%, Zebrafish: 93%
Characteristics:	This is a rabbit polyclonal antibody against Elf2. It was validated on Western Blot.
Purification:	Affinity Purified

Target Details

Target:	ELF2
Alternative Name:	Elf2 (ELF2 Products)

Target Details

Background: The function of this protein remains unknown.
Alias Symbols: -
Protein Size: 519

Molecular Weight: 57 kDa

Gene ID: 361944

NCBI Accession: [NM_001012181](#), [NP_001012181](#)

UniProt: [Q5XIS3](#)

Application Details

Application Notes: Optimal working dilutions should be determined experimentally by the investigator.

Comment: Antigen size: 519 AA

Restrictions: For Research Use only

Handling

Format: Liquid

Concentration: Lot specific

Buffer: Liquid. Purified antibody supplied in 1x PBS buffer with 0.09 % (w/v) sodium azide and 2 % sucrose.

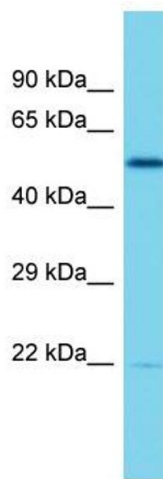
Preservative: Sodium azide

Precaution of Use: This product contains Sodium azide: a POISONOUS AND HAZARDOUS SUBSTANCE which should be handled by trained staff only.

Handling Advice: Avoid repeated freeze-thaw cycles.

Storage: -20 °C

Storage Comment: For short term use, store at 2-8°C up to 1 week. For long term storage, store at -20°C in small aliquots to prevent freeze-thaw cycles.



Western Blotting

Image 1. Host: Rabbit

Target Name: Elf2

Sample Tissue: Rat Thymus lysates

Antibody Dilution: 1.0 µg/mL