



[Go to Product page](#)

Datasheet for ABIN2787432

anti-MPRIP antibody (Middle Region)

1 Image

Overview

Quantity:	100 µL
Target:	MPRIP
Binding Specificity:	Middle Region
Reactivity:	Human, Mouse, Rat, Cow, Pig, Guinea Pig, Rabbit, Dog, Horse
Host:	Rabbit
Clonality:	Polyclonal
Conjugate:	This MPRIP antibody is un-conjugated
Application:	Western Blotting (WB)

Product Details

Immunogen:	The immunogen is a synthetic peptide directed towards the middle region of Rat Mprp
Sequence:	ATISAIEAMK NAHREEMERE LEKSQRSQIS SINSIDIALR RQYLEELQSV
Predicted Reactivity:	Cow: 93%, Dog: 86%, Guinea Pig: 86%, Horse: 93%, Human: 100%, Mouse: 86%, Pig: 93%, Rabbit: 86%, Rat: 86%
Characteristics:	This is a rabbit polyclonal antibody against Mprp. It was validated on Western Blot.
Purification:	Affinity Purified

Target Details

Target:	MPRIP
Alternative Name:	Mprp (MPRIP Products)

Target Details

Background: Mouse homolog binds F-actin and may play a role in F-actin bundling and cytoskeleton organization.

Alias Symbols: M-rip, Mrip, Rhoip3, p116Rip

Protein Interaction Partner: Ubc,

Protein Size: 1029

Molecular Weight: 113 kDa

Gene ID: 116504

NCBI Accession: [NM_053814](#), [NP_446266](#)

UniProt: [Q9ERE6](#)

Application Details

Application Notes: Optimal working dilutions should be determined experimentally by the investigator.

Comment: Antigen size: 1029 AA

Restrictions: For Research Use only

Handling

Format: Liquid

Concentration: Lot specific

Buffer: Liquid. Purified antibody supplied in 1x PBS buffer with 0.09 % (w/v) sodium azide and 2 % sucrose.

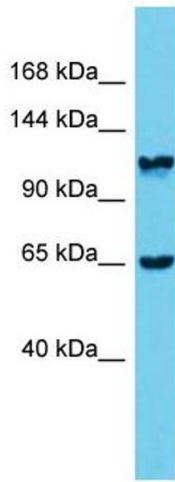
Preservative: Sodium azide

Precaution of Use: This product contains Sodium azide: a POISONOUS AND HAZARDOUS SUBSTANCE which should be handled by trained staff only.

Handling Advice: Avoid repeated freeze-thaw cycles.

Storage: -20 °C

Storage Comment: For short term use, store at 2-8°C up to 1 week. For long term storage, store at -20°C in small aliquots to prevent freeze-thaw cycles.



Western Blotting

Image 1. Host: Rabbit

Target Name: Mripip

Sample Tissue: Rat Stomach lysates

Antibody Dilution: 1.0 µg/mL