

Datasheet for ABIN2787448
anti-ZFP36L1 antibody (C-Term)



[Go to Product page](#)

2 Images

Overview

Quantity:	100 µL
Target:	ZFP36L1
Binding Specificity:	C-Term
Reactivity:	Human, Mouse, Rat, Dog, Cow, Guinea Pig, Horse, Rabbit, Zebrafish (Danio rerio)
Host:	Rabbit
Clonality:	Polyclonal
Conjugate:	This ZFP36L1 antibody is un-conjugated
Application:	Western Blotting (WB)

Product Details

Sequence:	PMSESPHMFDPSPSPQDSLSDHEGYLSSSSSSHSGSDSPTLDNSRRLPIF
Predicted Reactivity:	Cow: 100%, Dog: 100%, Guinea Pig: 100%, Horse: 100%, Human: 100%, Mouse: 93%, Rabbit: 93%, Rat: 100%, Zebrafish: 86%
Characteristics:	This is a rabbit polyclonal antibody against Zfp36l1. It was validated on Western Blot.
Purification:	Affinity Purified

Target Details

Target:	ZFP36L1
Alternative Name:	Zfp36l1 (ZFP36L1 Products)
Background:	The function of this protein remains unknown.

Target Details

Alias Symbols: AW742437, AW743212, Berg36, Brf1, D530020L18Rik, ERF1, TIS11b, cMG1
Protein Interaction Partner: Pcbd1,
Protein Size: 338

Molecular Weight: 36 kDa

Gene ID: 12192

NCBI Accession: [NM_007564](#), [NP_031590](#)

UniProt: [P23950](#)

Application Details

Application Notes: Optimal working dilutions should be determined experimentally by the investigator.

Comment: Antigen size: 338 AA

Restrictions: For Research Use only

Handling

Format: Liquid

Concentration: Lot specific

Buffer: Liquid. Purified antibody supplied in 1x PBS buffer with 0.09 % (w/v) sodium azide and 2 % sucrose.

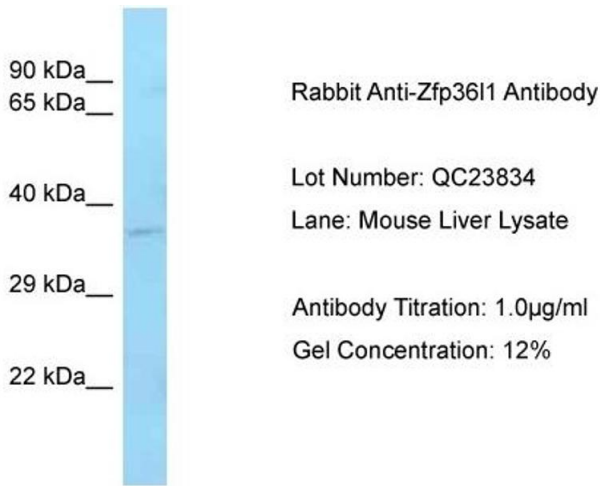
Preservative: Sodium azide

Precaution of Use: This product contains Sodium azide: a POISONOUS AND HAZARDOUS SUBSTANCE which should be handled by trained staff only.

Handling Advice: Avoid repeated freeze-thaw cycles.

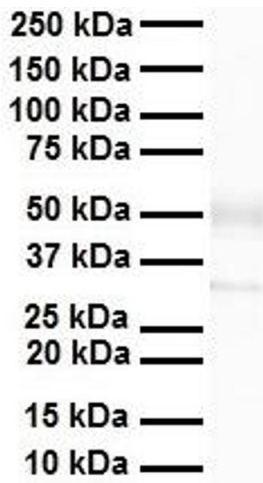
Storage: -20 °C

Storage Comment: For short term use, store at 2-8°C up to 1 week. For long term storage, store at -20°C in small aliquots to prevent freeze-thaw cycles.



Western Blotting

Image 1. Host: Rabbit Target Name: Zfp3611 Sample Type: Mouse Liver Antibody Dilution: 1.0ug/ml



Western Blotting

Image 2. WB Suggested Anti-Zfp3611 antibody Titration: 1 ug/mL Sample Type: Human heart