



[Go to Product page](#)

Datasheet for ABIN2787450  
**anti-HNF1A antibody (N-Term)**

2 Images

Overview

|                      |  |
|----------------------|--|
| Quantity:            | 100 µL   |
| Target:              | HNF1A  |
| Binding Specificity: | N-Term   |
| Reactivity:          | Human, Mouse, Rat, Dog, Horse, Cow, Guinea Pig, Zebrafish (Danio rerio), Sheep, Rabbit |
| Host:                | Rabbit   |
| Clonality:           | Polyclonal   |
| Conjugate:           | This HNF1A antibody is un-conjugated   |
| Application:         | Western Blotting (WB)  |

Product Details

|                       |   |
|-----------------------|---|
| Immunogen:            | The immunogen is a synthetic peptide directed towards the N terminal region of human HNF1A  |
| Sequence:             | HAGQGGLIEE PTGDELPTKK GRRNRFKWGP ASQQILFQAY ERQKNPSKEE  |
| Predicted Reactivity: | Cow: 100%, Dog: 100%, Guinea Pig: 100%, Horse: 100%, Human: 100%, Mouse: 100%, Rabbit: 86%, Rat: 100%, Sheep: 100%, Zebrafish: 100% |
| Characteristics:      | This is a rabbit polyclonal antibody against HNF1A. It was validated on Western Blot using a cell lysate as a positive control.     |
| Purification:         | Affinity Purified   |

Target Details

|         |       |
|---------|-------|
| Target: | HNF1A |
|---------|-------|

## Target Details

---

|                   |  |
|-------------------|--|
| Alternative Name: | HNF1A ( <a href="#">HNF1A Products</a> )   |
| Background:       | <p>HNF1A is required for the expression of several liver specific genes. HNF1A binds to the inverted palindrome 5'-GTTAATNATTAAC-3'.</p> <p>Alias Symbols: HNF1, LFB1, MODY3, TCF1, TCF-1, HNF-1A, IDDM20</p> <p>Protein Interaction Partner: RNF14, RYR3, RAC3, PCBD1, HIST2H2AB, RPSAP15, SNX14, CBX3, YWHAZ, YWHAG, YWHAE, YWHAB, VIM, VCP, HNF1A, SRSF7, RANBP1, PEBP1, LDHA, IGFBP7, HMGB1, ANXA2, ACTB, SIRT1, BCL6, EP300, CREBBP, GATA5, HNF1B, KAT2B, CDX2, HNF4A, TLE1, SRC, FOS, POU2F1, BCR, CEBP</p> <p>Protein Size: 631</p> |
| Molecular Weight: | 67 kDa   |
| Gene ID:          | 6927   |
| NCBI Accession:   | <a href="#">NM_000545</a> , <a href="#">NP_000536</a>  |
| UniProt:          | <a href="#">P20823</a>   |
| Pathways:         | <a href="#">Hormone Transport</a> , <a href="#">Carbohydrate Homeostasis</a>   |

## Application Details

---

|                    |  |
|--------------------|--|
| Application Notes: | Optimal working dilutions should be determined experimentally by the investigator. |
| Comment:           | Antigen size: 631 AA   |
| Restrictions:      | For Research Use only  |

## Handling

---

|                    |  |
|--------------------|--|
| Format:            | Liquid   |
| Concentration:     | Lot specific   |
| Buffer:            | Liquid. Purified antibody supplied in 1x PBS buffer with 0.09 % (w/v) sodium azide and 2 % sucrose.                    |
| Preservative:      | Sodium azide   |
| Precaution of Use: | This product contains Sodium azide: a POISONOUS AND HAZARDOUS SUBSTANCE which should be handled by trained staff only. |
| Handling Advice:   | Avoid repeated freeze-thaw cycles.   |
| Storage:           | -20 °C   |

## Handling

Storage Comment: For short term use, store at 2-8°C up to 1 week. For long term storage, store at -20°C in small aliquots to prevent freeze-thaw cycles.

## Images



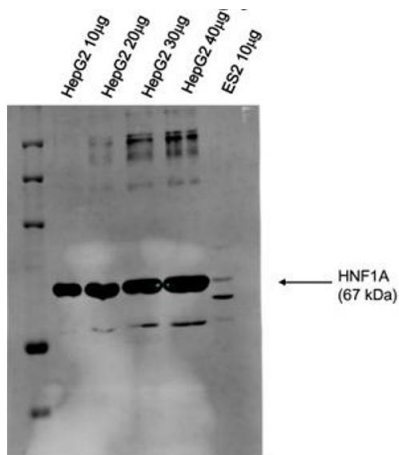
### Western Blotting

#### Image 1. WB Suggested Anti-HNF1A Antibody Titration:

0.2-1 ug/ml

**ELISA Titer:** 1:312500

**Positive Control:** Human kidney



### Western Blotting

#### Image 2. Sample Type: Human Liver Carcinoma (HepG2

lysate)10-40ug lysate/lane Primary Dilution:

1:1000 Secondary: Alexa Fluor 680 Donkey Anti-Rabbit IgG

Invitrogen Secondary Dilution: 1:30,000

See Immunoblot #2 Data for more information.