

Datasheet for ABIN2787461

anti-MED16 antibody (Middle Region)[Go to Product page](#)**1** Image

Overview

Quantity:	100 µL
Target:	MED16
Binding Specificity:	Middle Region
Reactivity:	Human, Mouse, Rat, Dog, Cow, Guinea Pig, Horse, Zebrafish (Danio rerio)
Host:	Rabbit
Clonality:	Polyclonal
Conjugate:	This MED16 antibody is un-conjugated
Application:	Western Blotting (WB)

Product Details

Immunogen:	The immunogen is a synthetic peptide directed towards the middle region of Human MED16
Sequence:	IVALSWLHNG VKLALHVEKS GASSFGEKFS RVKFSPSLTL FGGKPMEGWI
Predicted Reactivity:	Cow: 100%, Dog: 100%, Guinea Pig: 93%, Horse: 100%, Human: 100%, Mouse: 100%, Rat: 100%, Zebrafish: 79%
Characteristics:	This is a rabbit polyclonal antibody against MED16. It was validated on Western Blot.
Purification:	Affinity Purified

Target Details

Target:	MED16
Alternative Name:	MED16 (MED16 Products)

Target Details

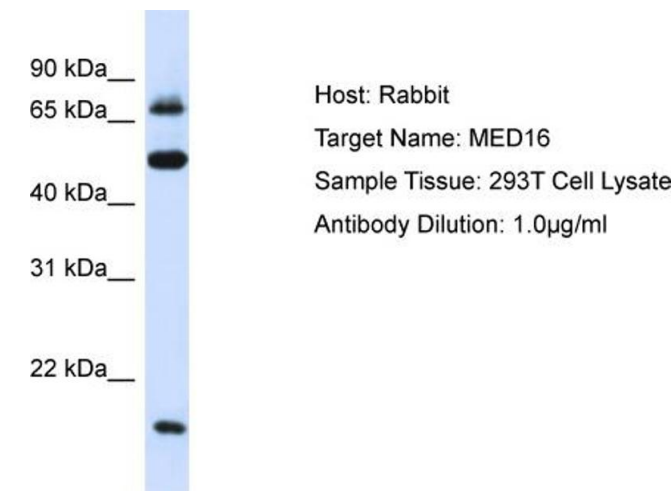
Background:	<p>MED16 is a component of the Mediator complex, a coactivator involved in the regulated transcription of nearly all RNA polymerase II-dependent genes. It mediator functions as a bridge to convey information from gene-specific regulatory proteins to the basal RNA polymerase II transcription machinery. Mediator is recruited to promoters by direct interactions with regulatory proteins and serves as a scaffold for the assembly of a functional preinitiation complex with RNA polymerase II and the general transcription factors.</p> <p>Protein Interaction Partner: HECW2, CDK19, CDK8, UBC, MED19, MED26, EPAS1, FBXW7, MED11, MED8, MED29, MED9, MED18, MED4, RALY, MED13, MED12, MED24, MED21, MED14, MED1, CTDP1, HIST1H3A, MED10, MED25, MED15, VDR, TRA, MED28, OBFC1, ZC3H13, QKI, TADA2A, SUPT7L, SUPT3H, MYC, KAT2A, TRRAP</p> <p>Protein Size: 663</p>
Molecular Weight:	72 kDa
Gene ID:	10025
Pathways:	Intracellular Steroid Hormone Receptor Signaling Pathway , Nuclear Hormone Receptor Binding , Regulation of Lipid Metabolism by PPARalpha

Application Details

Restrictions:	For Research Use only
---------------	-----------------------

Handling

Format:	Liquid
Concentration:	1 mg/mL
Buffer:	Liquid. Purified antibody supplied in 1x PBS buffer with 0.09 % (w/v) sodium azide and 2 % sucrose.
Preservative:	Sodium azide
Precaution of Use:	This product contains Sodium azide: a POISONOUS AND HAZARDOUS SUBSTANCE which should be handled by trained staff only.
Handling Advice:	Avoid repeat freeze-thaw cycles.
Storage:	-20 °C
Storage Comment:	For short term use, store at 2-8°C up to 1 week. For long term storage, store at -20°C in small aliquots to prevent freeze-thaw cycles.



Western Blotting

Image 1. Host: Rabbit Target Name: MED16 Sample Type: 293T Whole Cell lysates Antibody Dilution: 1.0ug/ml