



Datasheet for ABIN2787462
anti-PREB antibody (N-Term)



[Go to Product page](#)

1 Image

Overview

Quantity:	100 µL
Target:	PREB
Binding Specificity:	N-Term
Reactivity:	Human, Mouse, Rat, Cow, Pig, Rabbit, Dog, Horse, Guinea Pig, Zebrafish (Danio rerio)
Host:	Rabbit
Clonality:	Polyclonal
Conjugate:	This PREB antibody is un-conjugated
Application:	Western Blotting (WB)

Product Details

Immunogen:	The immunogen is a synthetic peptide directed towards the N-terminal region of Mouse Preb
Sequence:	RRRGVELYRA PFPLYALRID PKTGLLIAAG GGGAAKTGIK NGVHFLQLEL
Predicted Reactivity:	Cow: 100%, Dog: 100%, Guinea Pig: 86%, Horse: 100%, Human: 100%, Mouse: 100%, Pig: 100%, Rabbit: 100%, Rat: 100%, Zebrafish: 86%
Characteristics:	This is a rabbit polyclonal antibody against Preb. It was validated on Western Blot.
Purification:	Affinity Purified

Target Details

Target:	PREB
Alternative Name:	Preb (PREB Products)

Target Details

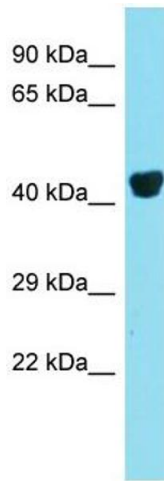
Background:	<p>Preb was first identified based on its probable role in the regulation of pituitary gene transcription. It binds to the prolactin gene (PRL) promoter and seems to activate transcription. Guanine nucleotide exchange factor that activates SARA2. It is also required for the formation of COPII transport vesicles from the ER.</p> <p>Alias Symbols: C85705</p> <p>Protein Interaction Partner: PREB, Ssbp4, Trip13, TGFBR1,</p> <p>Protein Size: 417</p>
Molecular Weight:	45 kDa
Gene ID:	50907
NCBI Accession:	NM_016703 , NP_057912
UniProt:	Q9WUQ2
Pathways:	ER-Nucleus Signaling

Application Details

Application Notes:	Optimal working dilutions should be determined experimentally by the investigator.
Comment:	Antigen size: 417 AA
Restrictions:	For Research Use only

Handling

Format:	Liquid
Concentration:	Lot specific
Buffer:	Liquid. Purified antibody supplied in 1x PBS buffer with 0.09 % (w/v) sodium azide and 2 % sucrose.
Preservative:	Sodium azide
Precaution of Use:	This product contains Sodium azide: a POISONOUS AND HAZARDOUS SUBSTANCE which should be handled by trained staff only.
Handling Advice:	Avoid repeated freeze-thaw cycles.
Storage:	-20 °C
Storage Comment:	For short term use, store at 2-8°C up to 1 week. For long term storage, store at -20°C in small aliquots to prevent freeze-thaw cycles.



Western Blotting

Image 1. Host: Rabbit

Target Name: Preb

Sample Tissue: Mouse Liver lysates

Antibody Dilution: 1.0 µg/mL