

Datasheet for ABIN2787463  
**anti-SNAPC5 antibody (N-Term)**[Go to Product page](#)

## 2 Images

## Overview

Quantity:	100 µL
Target:	SNAPC5
Binding Specificity:	N-Term
Reactivity:	Human, Mouse, Rabbit, Rat, Cow, Dog, Guinea Pig
Host:	Rabbit
Clonality:	Polyclonal
Conjugate:	This SNAPC5 antibody is un-conjugated
Application:	Western Blotting (WB)

## Product Details

Immunogen:	The immunogen is a synthetic peptide directed towards the N terminal region of human SNAPC5
Sequence:	KEEETLLRLK AALHDQLNRL KVEELALQSM ISSRRGDEML SSHTVPEQSH
Predicted Reactivity:	Cow: 100%, Dog: 100%, Guinea Pig: 100%, Human: 100%, Mouse: 100%, Rabbit: 100%, Rat: 100%
Characteristics:	This is a rabbit polyclonal antibody against SNAPC5. It was validated on Western Blot.
Purification:	Affinity Purified

## Target Details

Target:	SNAPC5
Alternative Name:	SNAPC5 ( <a href="#">SNAPC5 Products</a> )

## Target Details

**Background:** SNAPC5 is the part of the SNAPc complex required for the transcription of both RNA polymerase II and III small-nuclear RNA genes. SNAPC5 binds to the proximal sequence element (PSE), a non-TATA-box basal promoter element common to these 2 types of genes. Recruits TBP and BRF2 to the U6 snRNA TATA box.

Alias Symbols: SNAP19

Protein Interaction Partner: NUDT10, AMOT, NDEL1, CYTH4, NUP62, SSSCA1, NMI, NOL4, DDIT3, UBD, BATF, BRCC3, SNAPC4, JUN, SNAPC1,

Protein Size: 98

**Molecular Weight:** 11 kDa

**Gene ID:** 10302

**NCBI Accession:** [NM\\_006049](#), [NP\\_006040](#)

**UniProt:** [O75971](#)

## Application Details

**Application Notes:** Optimal working dilutions should be determined experimentally by the investigator.

**Comment:** Antigen size: 98 AA

**Restrictions:** For Research Use only

## Handling

**Format:** Liquid

**Concentration:** Lot specific

**Buffer:** Liquid. Purified antibody supplied in 1x PBS buffer with 0.09 % (w/v) sodium azide and 2 % sucrose.

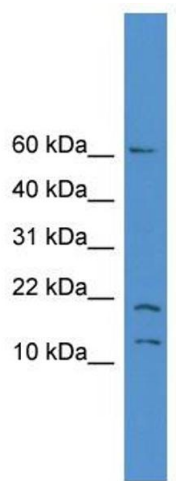
**Preservative:** Sodium azide

**Precaution of Use:** This product contains Sodium azide: a POISONOUS AND HAZARDOUS SUBSTANCE which should be handled by trained staff only.

**Handling Advice:** Avoid repeated freeze-thaw cycles.

**Storage:** -20 °C

**Storage Comment:** For short term use, store at 2-8°C up to 1 week. For long term storage, store at -20°C in small aliquots to prevent freeze-thaw cycles.



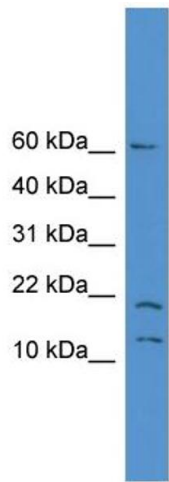
**Western Blotting**

**Image 1. WB Suggested Anti-SNAPC5 Antibody Titration:**

0.2-1 ug/ml

**ELISA Titer:** 1:312500

**Positive Control:** THP-1 cell lysate



**Rabbit Anti-SNAPC5 Antibody**  
Catalog Number: ARP57932  
Lot Number: QC23934  
Lane: THP-1 Cell Lysate

Antibody Titration: 1.0µg/ml  
Gel Concentration: 10-20%

**Western Blotting**

**Image 2. WB Suggested Anti-SNAPC5**

Antibody Titration: 0.2-1 µg/mL ELISA Titer: 1::12500

Positive Control: THP-1 cell lysate