

Datasheet for ABIN2787477  
**anti-KLF8 antibody (N-Term)**



[Go to Product page](#)

1 Image

## Overview

Quantity:	100 µL
Target:	KLF8
Binding Specificity:	N-Term
Reactivity:	Human, Rabbit, Guinea Pig, Mouse, Rat, Pig
Host:	Rabbit
Clonality:	Polyclonal
Conjugate:	This KLF8 antibody is un-conjugated
Application:	Western Blotting (WB)

## Product Details

Immunogen:	The immunogen is a synthetic peptide directed towards the N terminal region of human KLF8
Sequence:	LLASDFSLPQ VEPVDLSFHK PKAPLQPASM LQAPIRPPKP QSSPQTLVVS
Predicted Reactivity:	Guinea Pig: 86%, Human: 100%, Mouse: 79%, Pig: 90%, Rabbit: 93%, Rat: 86%
Characteristics:	This is a rabbit polyclonal antibody against KLF8. It was validated on Western Blot using a cell lysate as a positive control.
Purification:	Affinity Purified

## Target Details

Target:	KLF8
Alternative Name:	KLF8 ( <a href="#">KLF8 Products</a> )

## Target Details

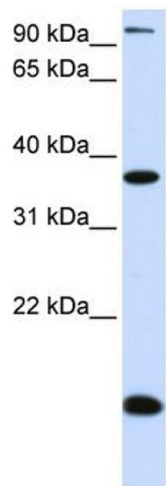
Background:	<p>KLF8 is abnormally expressed in female patients with X autosome translocation t(X,21)(p11.2,q22.3) and non-syndromic mental retardation.</p> <p>Alias Symbols: BKLF3, DKFZp686O08126, DXS741, MGC138314, ZNF741</p> <p>Protein Interaction Partner: Dlg4, APP, UBC, XPO1, PARP1, KAT2B, EP300, CREBBP, FHL3, CTBP2,</p> <p>Protein Size: 359</p>
Molecular Weight:	39 kDa
Gene ID:	11279
NCBI Accession:	<a href="#">NM_007250</a> , <a href="#">NP_009181</a>
UniProt:	<a href="#">O95600</a>

## Application Details

Application Notes:	Optimal working dilutions should be determined experimentally by the investigator.
Comment:	Antigen size: 359 AA
Restrictions:	For Research Use only

## Handling

Format:	Liquid
Concentration:	Lot specific
Buffer:	Liquid. Purified antibody supplied in 1x PBS buffer with 0.09 % (w/v) sodium azide and 2 % sucrose.
Preservative:	Sodium azide
Precaution of Use:	This product contains Sodium azide: a POISONOUS AND HAZARDOUS SUBSTANCE which should be handled by trained staff only.
Handling Advice:	Avoid repeated freeze-thaw cycles.
Storage:	-20 °C
Storage Comment:	For short term use, store at 2-8°C up to 1 week. For long term storage, store at -20°C in small aliquots to prevent freeze-thaw cycles.



**Western Blotting**

**Image 1. WB Suggested Anti-KLF8 Antibody Titration:**

0.2-1 ug/ml

**ELISA Titer:** 1:312500

**Positive Control:** Human Placenta