

Datasheet for ABIN2787485  
**anti-ERG antibody (N-Term)**



[Go to Product page](#)

2 Images

## Overview

Quantity:	100 µL
Target:	ERG
Binding Specificity:	N-Term
Reactivity:	Human, Mouse, Rat, Dog, Cow, Guinea Pig, Horse, Zebrafish (Danio rerio), Rabbit, Saccharomyces cerevisiae
Host:	Rabbit
Clonality:	Polyclonal
Conjugate:	This ERG antibody is un-conjugated
Application:	Western Blotting (WB)

## Product Details

Immunogen:	The immunogen is a synthetic peptide directed towards the N terminal region of human ERG
Sequence:	IMTKVHGKRY AYKDFDHGIA QALQPHPPES SLYKYPDL P YMGSYHAHPQ
Predicted Reactivity:	Cow: 100%, Dog: 100%, Guinea Pig: 100%, Horse: 100%, Human: 100%, Mouse: 100%, Rabbit: 100%, Rat: 100%, Yeast: 90%, Zebrafish: 85%
Characteristics:	This is a rabbit polyclonal antibody against ERG. It was validated on Western Blot using a cell lysate as a positive control.
Purification:	Affinity Purified

## Target Details

Target:	ERG
---------	-----

## Target Details

Alternative Name:	ERG ( <a href="#">ERG Products</a> )
Background:	<p>V-ets erythroblastosis virus E26 oncogene like isoform 2 (ERG) is a transcriptional regulator. It may participate in transcriptional regulation through the recruitment of SETDB1 histone methyltransferase and subsequent modification of local chromatin structure.</p> <p>Alias Symbols: erg-3, p55</p> <p>Protein Interaction Partner: UBC, SFPQ, RPLP0, PRKDC, POLR2A, PCBP1, NUMA1, NPM1, NONO, NCL, ILF3, ILF2, HSPD1, HNRNPU, HNRNPH3, HNRNPH1, HNRNPF, HNRNPD, HNRNPC, HNRNPAB, HNRNPA2B1, HNRNPA1, FBL, ELAVL1, EEF1A2, DKC1, CLTC, CDC5L, HNRNPUL2, RCC2, PRPF40A, SF3B1, SF3B3, SNRNP200, PUF6</p> <p>Protein Size: 462</p>
Molecular Weight:	52 kDa
Gene ID:	2078
NCBI Accession:	<a href="#">NM_004449</a> , <a href="#">NP_004440</a>
UniProt:	<a href="#">P11308</a>

## Application Details

Application Notes:	Optimal working dilutions should be determined experimentally by the investigator.
Comment:	Antigen size: 462 AA
Restrictions:	For Research Use only

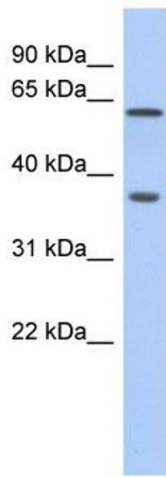
## Handling

Format:	Liquid
Concentration:	Lot specific
Buffer:	Liquid. Purified antibody supplied in 1x PBS buffer with 0.09 % (w/v) sodium azide and 2 % sucrose.
Preservative:	Sodium azide
Precaution of Use:	This product contains Sodium azide: a POISONOUS AND HAZARDOUS SUBSTANCE which should be handled by trained staff only.
Handling Advice:	Avoid repeated freeze-thaw cycles.
Storage:	-20 °C

Handling

Storage Comment: For short term use, store at 2-8°C up to 1 week. For long term storage, store at -20°C in small aliquots to prevent freeze-thaw cycles.

Images



Western Blotting

Image 1. WB Suggested Anti-ERG Antibody Titration: 0.2-1 ug/ml

ELISA Titer: 1:312500

Positive Control: Human Liver

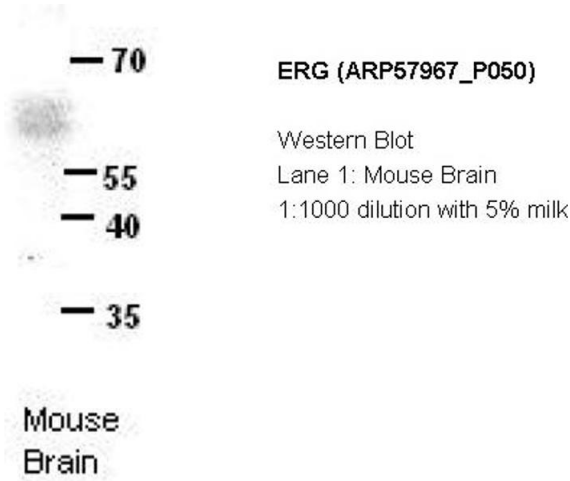


Image 2.