



[Go to Product page](#)

Datasheet for ABIN2787489  
**anti-EVX1 antibody (Middle Region)**

1 Image

### Overview

Quantity:	100 µL
Target:	EVX1
Binding Specificity:	Middle Region
Reactivity:	Human, Mouse, Rat, Cow, Guinea Pig, Horse
Host:	Rabbit
Clonality:	Polyclonal
Conjugate:	This EVX1 antibody is un-conjugated
Application:	Western Blotting (WB)

### Product Details

Immunogen:	The immunogen is a synthetic peptide directed towards the middle region of human EVX1
Sequence:	GSGSEALVGS PNGGSETPKS NGGSGGGGSQ GTLACSASDQ MRRYRTAFTR
Predicted Reactivity:	Cow: 75%, Guinea Pig: 86%, Horse: 92%, Human: 100%, Mouse: 79%, Rat: 86%
Characteristics:	This is a rabbit polyclonal antibody against EVX1. It was validated on Western Blot using a cell lysate as a positive control.
Purification:	Affinity Purified

### Target Details

Target:	EVX1
Alternative Name:	EVX1 ( <a href="#">EVX1 Products</a> )

## Target Details

---

**Background:** EVX1 is a member of the vertebrate eve-related homeo box family. This protein acts as a transcriptional repressor. A similar protein in mice is critical for early embryogenesis. This gene encodes a member of the even-skipped homeobox family characterized by the presence of a homeodomain closely related to the Drosophila even-skipped (eve) segmentation gene of the pair-rule class. The encoded protein may play an important role as a transcriptional repressor during embryogenesis. PRIMARYREFSEQ\_SPAN PRIMARY\_IDENTIFIER PRIMARY\_SPAN COMP 1-343 AC004080.2 115915-116257 344-1717 X60655.1 86-1459 1718-1858 AC004080.2 119803-119943

Alias Symbols: -

Protein Interaction Partner: RAD21,

Protein Size: 407

---

**Molecular Weight:** 42 kDa

---

**Gene ID:** 2128

---

**NCBI Accession:** [NM\\_001989](#), [NP\\_001980](#)

---

**UniProt:** [P49640](#)

## Application Details

---

**Application Notes:** Optimal working dilutions should be determined experimentally by the investigator.

---

**Comment:** Antigen size: 407 AA

---

**Restrictions:** For Research Use only

## Handling

---

**Format:** Liquid

---

**Concentration:** Lot specific

---

**Buffer:** Liquid. Purified antibody supplied in 1x PBS buffer with 0.09 % (w/v) sodium azide and 2 % sucrose.

---

**Preservative:** Sodium azide

---

**Precaution of Use:** This product contains Sodium azide: a POISONOUS AND HAZARDOUS SUBSTANCE which should be handled by trained staff only.

---

**Handling Advice:** Avoid repeated freeze-thaw cycles.

---

**Storage:** -20 °C

---

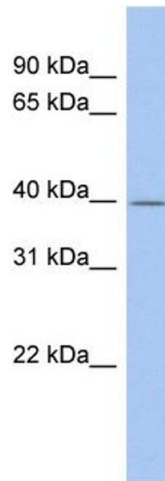
## Handling

---

Storage Comment: For short term use, store at 2-8°C up to 1 week. For long term storage, store at -20°C in small aliquots to prevent freeze-thaw cycles.

## Images

---



### Western Blotting

**Image 1. WB Suggested Anti-EVX1 Antibody Titration:** 0.2-1 ug/ml

**ELISA Titer:** 1:62500

**Positive Control:** MCF7 cell lysate