

Datasheet for ABIN2787491
anti-ATF5 antibody (Middle Region)[Go to Product page](#)[1 Image](#)[1 Publication](#)

Overview

Quantity:	100 µL
Target:	ATF5
Binding Specificity:	Middle Region
Reactivity:	Human, Mouse, Rat, Horse, Cow, Guinea Pig, Zebrafish (Danio rerio), Dog
Host:	Rabbit
Clonality:	Polyclonal
Conjugate:	This ATF5 antibody is un-conjugated
Application:	Western Blotting (WB)

Product Details

Immunogen:	The immunogen is a synthetic peptide directed towards the middle region of human ATF5
Sequence:	LPPPQPPPP SPPQPSRLAP YPHPATTRGD RKQKKRDQNK SAALRYRQRK
Predicted Reactivity:	Cow: 100%, Dog: 100%, Guinea Pig: 100%, Horse: 100%, Human: 100%, Mouse: 100%, Rat: 100%, Zebrafish: 93%
Characteristics:	This is a rabbit polyclonal antibody against ATF5. It was validated on Western Blot using a cell lysate as a positive control.
Purification:	Affinity Purified

Target Details

Target:	ATF5
---------	------

Target Details

Alternative Name:	ATF5 (ATF5 Products)
Background:	<p>ATF5 belongs to the bZIP family. It is transcriptional activator which binds the cAMP response element (CRE) (consensus: 5'-GTGACGT[AC][AG]-3'), a sequence present in many viral and cellular promoters and blocks the differentiation of neuroprogenitor cells into neurons. Its transcriptional activity is enhanced by CCND3 and slightly inhibited by CDK4. Loss of ATF5 is associated with hepatocellular carcinoma.</p> <p>Alias Symbols: ATFX, FLJ34666, HMFN0395</p> <p>Protein Interaction Partner: CEBPE, CEBPA, GIT2, ATXN1, EP300, CCND3, GABBR2, DISC1, GABBR1, CEBPG, CDC34, TRIB3, UBC, CD34,</p> <p>Protein Size: 282</p>
Molecular Weight:	31 kDa
Gene ID:	22809
NCBI Accession:	NM_012068 , NP_036200
UniProt:	B3KND3
Pathways:	Myometrial Relaxation and Contraction

Application Details

Application Notes:	Optimal working dilutions should be determined experimentally by the investigator.
Comment:	Antigen size: 282 AA
Restrictions:	For Research Use only

Handling

Format:	Liquid
Concentration:	Lot specific
Buffer:	Liquid. Purified antibody supplied in 1x PBS buffer with 0.09 % (w/v) sodium azide and 2 % sucrose.
Preservative:	Sodium azide
Precaution of Use:	This product contains Sodium azide: a POISONOUS AND HAZARDOUS SUBSTANCE which should be handled by trained staff only.
Handling Advice:	Avoid repeated freeze-thaw cycles.

Handling

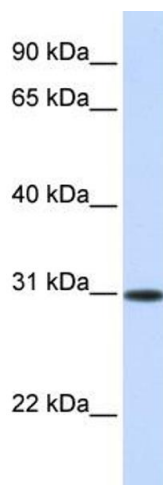
Storage: -20 °C

Storage Comment: For short term use, store at 2-8°C up to 1 week. For long term storage, store at -20°C in small aliquots to prevent freeze-thaw cycles.

Publications

Product cited in: Wei, Jiang, Liu, Zhou, Chen, Zhang, Zong, Yun, Gu: "Cdc34-mediated degradation of ATF5 is blocked by cisplatin." in: **The Journal of biological chemistry**, Vol. 283, Issue 27, pp. 18773-81, (2008) ([PubMed](#)).

Images



Western Blotting

Image 1. WB Suggested Anti-ATF5 Antibody Titration: 0.2-1 ug/ml

ELISA Titer: 1:62500

Positive Control: Human Liver