

Datasheet for ABIN2787529  
**anti-ZNF566 antibody (Middle Region)**[Go to Product page](#)

## 1 Image

## Overview

Quantity:	100 µL
Target:	ZNF566
Binding Specificity:	Middle Region
Reactivity:	Human, Cow, Horse, Rat, Dog, Pig, Rabbit, Guinea Pig, Mouse, Zebrafish (Danio rerio)
Host:	Rabbit
Clonality:	Polyclonal
Conjugate:	This ZNF566 antibody is un-conjugated
Application:	Western Blotting (WB)

## Product Details

Immunogen:	The immunogen is a synthetic peptide directed towards the following sequence YECKECGKAFSSGSNFTQHQRHTGEKPYECKECGNAFSQSSQLIKHQRI
Sequence:	YECKECGKAF SSGSNFTQHQ RIHTGEKPYE CKECGNAFSQ SSQLIKHQRI
Predicted Reactivity:	Cow: 93%, Dog: 93%, Guinea Pig: 86%, Horse: 100%, Human: 100%, Mouse: 100%, Pig: 93%, Rabbit: 93%, Rat: 100%, Zebrafish: 93%
Characteristics:	This is a rabbit polyclonal antibody against Zfp566. It was validated on Western Blot.
Purification:	Affinity Purified

## Target Details

Target:	ZNF566
---------	--------

## Target Details

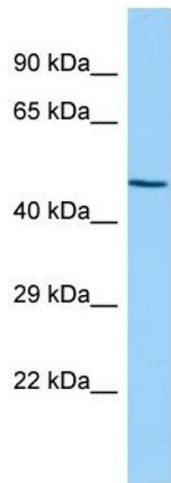
Alternative Name:	Zfp566 ( <a href="#">ZNF566 Products</a> )
Background:	The function of this protein remains unknown. Alias Symbols: RGD1563239 Protein Size: 386
Molecular Weight:	45 kDa
Gene ID:	502316
NCBI Accession:	<a href="#">NM_001134726</a> , <a href="#">NP_001128198</a>
UniProt:	<a href="#">B2RZ94</a>

## Application Details

Application Notes:	Optimal working dilutions should be determined experimentally by the investigator.
Comment:	Antigen size: 386 AA
Restrictions:	For Research Use only

## Handling

Format:	Liquid
Concentration:	Lot specific
Buffer:	Liquid. Purified antibody supplied in 1x PBS buffer with 0.09 % (w/v) sodium azide and 2 % sucrose.
Preservative:	Sodium azide
Precaution of Use:	This product contains Sodium azide: a POISONOUS AND HAZARDOUS SUBSTANCE which should be handled by trained staff only.
Handling Advice:	Avoid repeated freeze-thaw cycles.
Storage:	-20 °C
Storage Comment:	For short term use, store at 2-8°C up to 1 week. For long term storage, store at -20°C in small aliquots to prevent freeze-thaw cycles.



Western Blotting

**Image 1.** Host: Rabbit Target Name: Zfp566 Sample Type: Rat Spleen lysates Antibody Dilution: 1.0ug/ml