

Datasheet for ABIN2787533
anti-NKX3-2 antibody (Middle Region)[Go to Product page](#)[1 Image](#)[1 Publication](#)

Overview

Quantity:	100 µL
Target:	NKX3-2
Binding Specificity:	Middle Region
Reactivity:	Human, Mouse, Rat, Dog, Cow, Rabbit, Guinea Pig, Saccharomyces cerevisiae
Host:	Rabbit
Clonality:	Polyclonal
Conjugate:	This NKX3-2 antibody is un-conjugated
Application:	Western Blotting (WB)

Product Details

Immunogen:	The immunogen is a synthetic peptide directed towards the middle region of human NKX3-2
Sequence:	GAGGGGGSGP AGVAEEEEEP AAPKPRKKRS RAAFSHAQVF ELERRFNHQR
Predicted Reactivity:	Cow: 93%, Dog: 100%, Guinea Pig: 100%, Human: 100%, Mouse: 100%, Rabbit: 100%, Rat: 100%, Yeast: 83%
Characteristics:	This is a rabbit polyclonal antibody against NKX3-2. It was validated on Western Blot using a cell lysate as a positive control.
Purification:	Affinity Purified

Target Details

Target:	NKX3-2
---------	--------

Target Details

Alternative Name:	NKX3-2 (NKX3-2 Products)
Background:	<p>NKX3-2 is a member of the NK family of homeobox-containing proteins. It may play a role in skeletal development. This gene encodes a member of the NK family of homeobox-containing proteins. The encoded protein may play a role in skeletal development. Sequence Note: This RefSeq record was created from transcript and genomic sequence data because no single transcript was available for the full length of the gene. The extent of this transcript is supported by transcript alignments. PRIMARYREFSEQ_SPAN PRIMARY_IDENTIFIER PRIMARY_SPAN COMP 1-1111 BC111966.1 1-1111 1112-2241 AC006445.11 110916-112045</p> <p>Alias Symbols: BAPX1, MGC138171, NKX3.2, NKX3B, SMMD</p> <p>Protein Interaction Partner: SIN3A, RBBP7, RBBP4, SMAD4, SMAD1, HDAC1,</p> <p>Protein Size: 333</p>
Molecular Weight:	35 kDa
Gene ID:	579
NCBI Accession:	NM_001189 , NP_001180
UniProt:	P78367

Application Details

Application Notes:	Optimal working dilutions should be determined experimentally by the investigator.
Comment:	Antigen size: 333 AA
Restrictions:	For Research Use only

Handling

Format:	Liquid
Concentration:	Lot specific
Buffer:	Liquid. Purified antibody supplied in 1x PBS buffer with 0.09 % (w/v) sodium azide and 2 % sucrose.
Preservative:	Sodium azide
Precaution of Use:	This product contains Sodium azide: a POISONOUS AND HAZARDOUS SUBSTANCE which should be handled by trained staff only.
Handling Advice:	Avoid repeated freeze-thaw cycles.

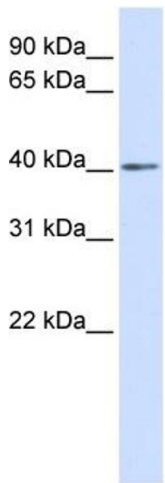
Handling

Storage:	-20 °C
Storage Comment:	For short term use, store at 2-8°C up to 1 week. For long term storage, store at -20°C in small aliquots to prevent freeze-thaw cycles.

Publications

Product cited in:	Kamel, Hoyos, Rochard, Dougherty, Kong, Tse, Shubinets, Grimaldi, Liao: "Requirement for frzb and fzd7a in cranial neural crest convergence and extension mechanisms during zebrafish palate and jaw morphogenesis." in: Developmental biology , Vol. 381, Issue 2, pp. 423-33, (2013) (PubMed).
-------------------	---

Images



Western Blotting

Image 1. WB Suggested Anti-NKX3-2 Antibody Titration:
0.2-1 ug/ml
ELISA Titer: 1:312500
Positive Control: 293T cell lysate