

Datasheet for ABIN2787554
anti-TFEB antibody (Middle Region)

5 Images

[Go to Product page](#)

Overview

Quantity:	100 µL
Target:	TFEB
Binding Specificity:	Middle Region
Reactivity:	Human, Dog, Cow, Horse, Goat, Rabbit
Host:	Rabbit
Clonality:	Polyclonal
Conjugate:	This TFEB antibody is un-conjugated
Application:	Western Blotting (WB)

Product Details

Immunogen:	The immunogen is a synthetic peptide directed towards the middle region of human TFEB
Sequence:	DFSHLSFGG REDEGPPGY EPLAPGHGSP FPSLSKKDLD LMLLDDSLLP
Predicted Reactivity:	Cow: 79%, Dog: 86%, Goat: 79%, Horse: 85%, Human: 100%, Rabbit: 86%
Characteristics:	This is a rabbit polyclonal antibody against TFEB. It was validated on Western Blot.
Purification:	Affinity Purified

Target Details

Target:	TFEB
Alternative Name:	TFEB (TFEB Products)
Background:	The TFEB gene fuses with an intronless gene in renal tumors harboring the t(6,11)(p21,q13)

Target Details

chromosome translocation. It encodes a protein that is a highly sensitive and specific diagnostic marker for renal neoplasms.

Alias Symbols: AlphaTFEB, TCFEB, BHLHE35, ALPHATFEB

Protein Interaction Partner: SRPK1, YWHAQ, TFEC, TFE3, MITF,

Protein Size: 476

Molecular Weight: 53 kDa

Gene ID: 7942

NCBI Accession: [NM_007162](#), [NP_009093](#)

UniProt: [P19484](#)

Application Details

Application Notes: Optimal working dilutions should be determined experimentally by the investigator.

Comment: Antigen size: 476 AA

Restrictions: For Research Use only

Handling

Format: Liquid

Concentration: Lot specific

Buffer: Liquid. Purified antibody supplied in 1x PBS buffer with 0.09 % (w/v) sodium azide and 2 % sucrose.

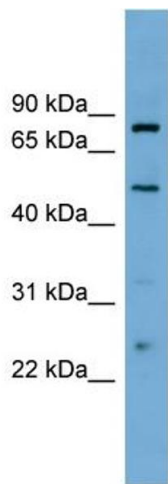
Preservative: Sodium azide

Precaution of Use: This product contains Sodium azide: a POISONOUS AND HAZARDOUS SUBSTANCE which should be handled by trained staff only.

Handling Advice: Avoid repeated freeze-thaw cycles.

Storage: -20 °C

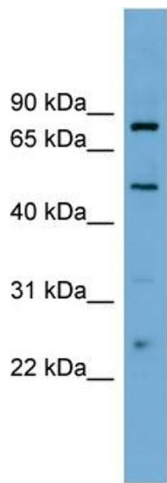
Storage Comment: For short term use, store at 2-8°C up to 1 week. For long term storage, store at -20°C in small aliquots to prevent freeze-thaw cycles.



Western Blotting

Image 1. WB Suggested Anti-TFEB Antibody Titration: 0.2-1 ug/ml

Positive Control: PANC1 cell lysate



Rabbit Anti-TFEB Antibody
Catalog Number: ARP58116
Lot Number: QC24381
Lane: PANC1 Cell Lysate

Antibody Titration: 1.0µg/ml
Gel Concentration: 12%

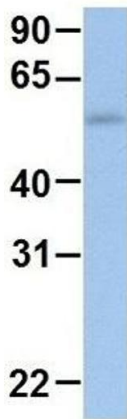
Western Blotting

Image 2. WB Suggested Anti-TFEB

Antibody Titration: 0.2-1 µg/mL

Positive Control: PANC1 cell lysate

TFEB



Rabbit Anti-TFEB
Sample Type: Human Fetal Muscle
Antibody Concentration: 1ug/mL

Western Blotting

Image 3. Host: Rabbit

Target Name: TFEB

Sample Tissue: Human Fetal Muscle

Antibody Dilution: 1.0 µg/mL

Please check the [product details page](#) for more images. Overall 5 images are available for ABIN2787554.