



[Go to Product page](#)

Datasheet for ABIN2787564

## anti-TRIM15 antibody (Middle Region)

3 Images

1 Publication

### Overview

Quantity:	100 µL
Target:	TRIM15
Binding Specificity:	Middle Region
Reactivity:	Human, Cow, Rabbit, Pig, Saccharomyces cerevisiae
Host:	Rabbit
Clonality:	Polyclonal
Conjugate:	This TRIM15 antibody is un-conjugated
Application:	Western Blotting (WB), Immunohistochemistry (IHC)

### Product Details

Immunogen:	The immunogen is a synthetic peptide directed towards the middle region of human TRIM15
Sequence:	HLEIDSGVIT LDPQTASRSL VLSEDRKSVR YTRQKKSLPD SPLRFDGLPA
Predicted Reactivity:	Cow: 86%, Human: 100%, Pig: 86%, Rabbit: 79%, Yeast: 100%
Characteristics:	This is a rabbit polyclonal antibody against TRIM15. It was validated on Western Blot using a cell lysate as a positive control.
Purification:	Affinity Purified

### Target Details

Target:	TRIM15
Alternative Name:	TRIM15 ( <a href="#">TRIM15 Products</a> )

## Target Details

---

**Background:** TRIM15 is a member of the tripartite motif (TRIM) family. The TRIM motif includes three zinc-binding domains, a RING, a B-box type 1 and a B-box type 2, and a coiled-coil region. The protein localizes to the cytoplasm. Its function has not been identified. The protein encoded by this gene is a member of the tripartite motif (TRIM) family. The TRIM motif includes three zinc-binding domains, a RING, a B-box type 1 and a B-box type 2, and a coiled-coil region. The protein localizes to the cytoplasm. Alternatively spliced transcript variants have been described, but their biological validity has not been determined.

Alias Symbols: RNF93, ZNF178, ZNFB7

Protein Interaction Partner: FAM151B, FAM161A, RABGEF1, TRIM8, TINF2, ACD, TRIM15, EHMT1, TAF9B, SNW1, MED7, MYBL2, IRF5, GTF2E1, UBE2U,

Protein Size: 465

---

**Molecular Weight:** 52 kDa

---

**Gene ID:** 89870

---

**NCBI Accession:** [NM\\_033229](#), [NP\\_150232](#)

---

**UniProt:** [Q9C019](#)

## Application Details

---

**Application Notes:** Optimal working dilutions should be determined experimentally by the investigator.

---

**Comment:** Antigen size: 465 AA

---

**Restrictions:** For Research Use only

## Handling

---

**Format:** Liquid

---

**Concentration:** Lot specific

---

**Buffer:** Liquid. Purified antibody supplied in 1x PBS buffer with 0.09 % (w/v) sodium azide and 2 % sucrose.

---

**Preservative:** Sodium azide

---

**Precaution of Use:** This product contains Sodium azide: a POISONOUS AND HAZARDOUS SUBSTANCE which should be handled by trained staff only.

---

**Handling Advice:** Avoid repeated freeze-thaw cycles.

---

**Storage:** -20 °C

---

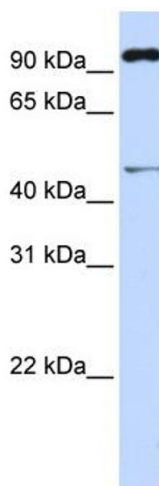
## Handling

Storage Comment: For short term use, store at 2-8°C up to 1 week. For long term storage, store at -20°C in small aliquots to prevent freeze-thaw cycles.

## Publications

Product cited in: Stouffs, Tournaye, Van der Elst, Haentjens, Liebaers, Lissens: "Do we need to search for gr/gr deletions in infertile men in a clinical setting?" in: **Human reproduction (Oxford, England)**, Vol. 23, Issue 5, pp. 1193-9, (2008) ([PubMed](#)).

## Images



### Western Blotting

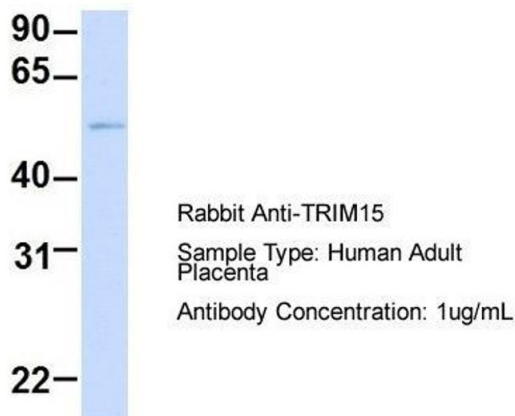
#### Image 1. WB Suggested Anti-TRIM15 Antibody Titration:

0.2-1 ug/ml

**ELISA Titer:** 1:312500

**Positive Control:** 721\_B cell lysate

## TRIM15



### Western Blotting

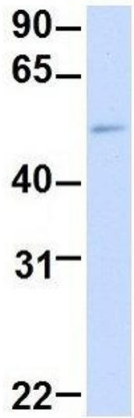
**Image 2.** Host: Rabbit

Target Name: TRIM15

Sample Tissue: Human Adult Placenta

Antibody Dilution: 1.0 µg/mL

# TRIM15



Rabbit Anti-TRIM15  
Sample Type: Human Fetal Muscle  
Antibody Concentration: 1ug/mL

## Western Blotting

**Image 3.** Host: Rabbit

Target Name: TRIM15

Sample Tissue: Human Fetal Muscle

Antibody Dilution: 1.0 µg/mL