

Datasheet for ABIN2787574  
**anti-HMGB2 antibody (Middle Region)**



[Go to Product page](#)

**3** Images

## Overview

Quantity:	100 µL
Target:	HMGB2
Binding Specificity:	Middle Region
Reactivity:	Human, Mouse, Rat, Cow, Rabbit, Dog, Horse, Guinea Pig, Pig, Zebrafish (Danio rerio)
Host:	Rabbit
Clonality:	Polyclonal
Conjugate:	This HMGB2 antibody is un-conjugated
Application:	Western Blotting (WB), Immunohistochemistry (IHC)

## Product Details

Immunogen:	The immunogen is a synthetic peptide directed towards the middle region of human HMGB2
Sequence:	DREMKNYVPP KGDKKGKKKD PNAPKRPPSA FFLFCSEHRP KIKSEHPGLS
Predicted Reactivity:	Cow: 100%, Dog: 100%, Guinea Pig: 87%, Horse: 100%, Human: 100%, Mouse: 100%, Pig: 100%, Rabbit: 100%, Rat: 100%, Zebrafish: 80%
Characteristics:	This is a rabbit polyclonal antibody against HMGB2. It was validated on Western Blot using a cell lysate as a positive control.
Purification:	Affinity Purified

## Target Details

Target:	HMGB2
---------	-------

## Target Details

Alternative Name:	HMGB2 ( <a href="#">HMGB2 Products</a> )
Background:	<p>HMGB2 is a member of the non-histone chromosomal high mobility group protein family. The proteins of this family are chromatin-associated and ubiquitously distributed in the nucleus of higher eukaryotic cells. In vitro studies have demonstrated that this protein is able to efficiently bend DNA and form DNA circles. These studies suggest a role in facilitating cooperative interactions between cis-acting proteins by promoting DNA flexibility. HMGB2 was also reported to be involved in the final ligation step in DNA end-joining processes of DNA double-strand breaks repair and V(D)J recombination. This gene encodes a member of the non-histone chromosomal high mobility group protein family. The proteins of this family are chromatin-associated and ubiquitously distributed in the nucleus of higher eukaryotic cells. In vitro studies have demonstrated that this protein is able to efficiently bend DNA and form DNA circles. These studies suggest a role in facilitating cooperative interactions between cis-acting proteins by promoting DNA flexibility. This protein was also reported to be involved in the final ligation step in DNA end-joining processes of DNA double-strand breaks repair and V(D)J recombination.</p> <p>Publication Note: This RefSeq record includes a subset of the publications that are available for this gene. Please see the Entrez Gene record to access additional publications.</p> <p>Alias Symbols: HMG2</p> <p>Protein Interaction Partner: PKNOX1, UBC, EED, YWHAG, PGD, LDHB, CKB, HMGA1, GZMK, GZMA, CSNK1A1, FN1, SCAF8, APP, TFAP4, CDK2, BKRF1, Cebpb, ELAVL1, HMGB1, CHAF1A, CREBBP, SET, PGR, POU3F1, PRKDC, TP53, RAG1, POU5F1, POU2F2, POU2F1, APEX1, AR, NR3C1,</p> <p>Protein Size: 209</p>
Molecular Weight:	24 kDa
Gene ID:	3148
NCBI Accession:	<a href="#">NM_002129</a> , <a href="#">NP_002120</a>
UniProt:	<a href="#">P26583</a>
Pathways:	<a href="#">Cellular Response to Molecule of Bacterial Origin</a>

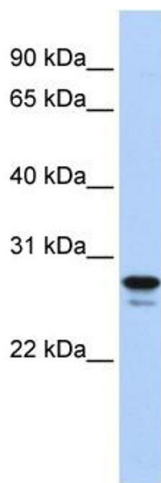
## Application Details

Application Notes:	Optimal working dilutions should be determined experimentally by the investigator.
Comment:	Antigen size: 209 AA
Restrictions:	For Research Use only

## Handling

Format:	Liquid
Concentration:	Lot specific
Buffer:	Liquid. Purified antibody supplied in 1x PBS buffer with 0.09 % (w/v) sodium azide and 2 % sucrose.
Preservative:	Sodium azide
Precaution of Use:	This product contains Sodium azide: a POISONOUS AND HAZARDOUS SUBSTANCE which should be handled by trained staff only.
Handling Advice:	Avoid repeated freeze-thaw cycles.
Storage:	-20 °C
Storage Comment:	For short term use, store at 2-8°C up to 1 week. For long term storage, store at -20°C in small aliquots to prevent freeze-thaw cycles.

## Images



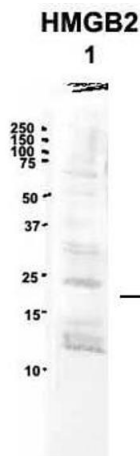
### Western Blotting

#### Image 1. WB Suggested Anti-HMGB2 Antibody Titration:

0.2-1 ug/ml

**ELISA Titer:** 1:12500

**Positive Control:** Jurkat cell lysate



See Immunoblot 2 Data for more information.

### Western Blotting

**Image 2. Sample Type:** 1. Human NT-2 cells (60ug)

**Primary Antibody Dilution:** 2ug/ml

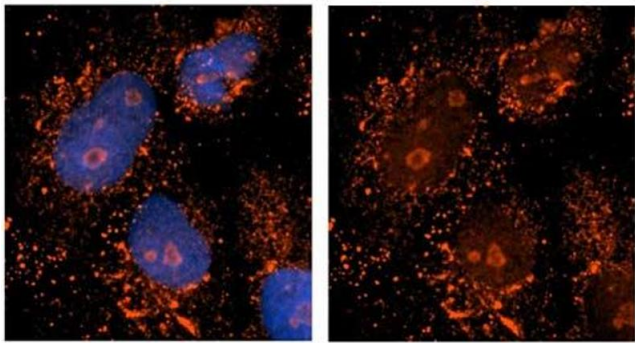
**Secondary Antibody:** IRDye 800CW goat anti-rabbit from Li-COR Bioscience

**Secondary Antibody Dilution:** 1: 20,000

**Image Submitted by:** Yuzhi Chen

University of Arkansas for Medical Science

# HMGB2



See Immunohistochemistry 1 Data and Customer Feedback tab for more information.

## Immunohistochemistry

**Image 3. Sample Type:** NT2 cells

**Red:** Antibody

**Blue:** DAPI

**Primary Dilution:** 1ug/50ul antibody

**Secondary Antibody:** Alexa goat anti-rabbit 594

**Image Submitted by:** Yuzhi Chen, University of Arkansas for Medical Sciences