

Datasheet for ABIN2787592
anti-KDM4B antibody (Middle Region)



[Go to Product page](#)

2 Images

Overview

Quantity:	100 µL
Target:	KDM4B
Binding Specificity:	Middle Region
Reactivity:	Human, Mouse, Rat, Horse, Pig, Dog, Guinea Pig, Cow
Host:	Rabbit
Clonality:	Polyclonal
Conjugate:	This KDM4B antibody is un-conjugated
Application:	Western Blotting (WB)

Product Details

Immunogen:	The immunogen is a synthetic peptide directed towards the middle region of human JMJD2B
Sequence:	SASRASLKAK LLRRSHRKRS QPKKPKPEDP KFPGEGETAGA ALLEEAGGSV
Predicted Reactivity:	Cow: 92%, Dog: 93%, Guinea Pig: 83%, Horse: 93%, Human: 100%, Mouse: 82%, Pig: 93%, Rat: 100%
Characteristics:	This is a rabbit polyclonal antibody against JMJD2B. It was validated on Western Blot using a cell lysate as a positive control.
Purification:	Affinity Purified

Target Details

Target:	KDM4B
---------	-------

Target Details

Alternative Name:	JMJD2B (KDM4B Products)
Background:	<p>JMJD2 family proteins are classified into one group with JD2H and TUDOR domains and another group without JD2H or TUDOR domains. Because JMJD2C gene (also known as GASC1 gene) is amplified in esophageal squamous cell carcinoma (ESCC), JMJD2 family genes are cancer-associated genes. Human genes corresponding to KIAA0677, KIAA0876, KIAA0780 and FLJ10251 cDNAs were designated JMJD2A, JMJD2B, JMJD2C, and JMJD2D, respectively. In addition, JMJD2D homologous genes within human genome sequences AP002383.3 and AP001264.4 were designated JMJD2E and JMJD2F, respectively. C2HC2HC2- and C5HC2-type Cys (His) clusters were identified as the region conserved among JMJD2A (1064 aa), JMJD2B (1096 aa), and JMJD2C (1056 aa) proteins. JMJD2A, JMJD2B and JMJD2C consist of JmjN, JmjC, JD2H, and two TUDOR domains.</p> <p>Alias Symbols: FLJ44906, KDM4B, KIAA0876, JMJD2B</p> <p>Protein Interaction Partner: UBC, H3F3C, HSP90B1, HSP90AA2P, SMU1, KMT2C, WDR5, ASH2L, KMT2D, RBBP5, HSPA4, HNRNPU, ESR1, MED10,</p> <p>Protein Size: 1096</p>
Molecular Weight:	122 kDa
Gene ID:	23030
NCBI Accession:	NM_015015 , NP_055830
UniProt:	O94953
Pathways:	Warburg Effect

Application Details

Application Notes:	Optimal working dilutions should be determined experimentally by the investigator.
Comment:	Antigen size: 1096 AA
Restrictions:	For Research Use only

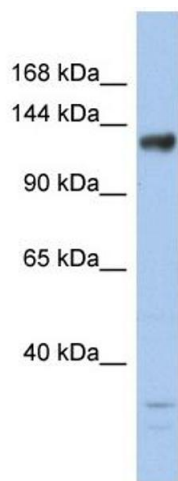
Handling

Format:	Liquid
Concentration:	Lot specific
Buffer:	Liquid. Purified antibody supplied in 1x PBS buffer with 0.09 % (w/v) sodium azide and 2 % sucrose.

Handling

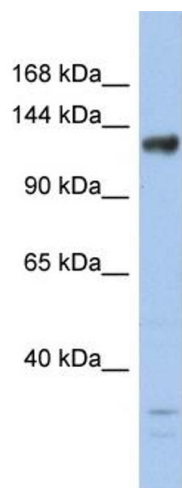
Preservative:	Sodium azide
Precaution of Use:	This product contains Sodium azide: a POISONOUS AND HAZARDOUS SUBSTANCE which should be handled by trained staff only.
Handling Advice:	Avoid repeated freeze-thaw cycles.
Storage:	-20 °C
Storage Comment:	For short term use, store at 2-8°C up to 1 week. For long term storage, store at -20°C in small aliquots to prevent freeze-thaw cycles.

Images



Western Blotting

Image 1. WB Suggested Anti-JMJD2B Antibody Titration:
0.2-1 ug/ml
ELISA Titer: 1:1562500
Positive Control: Human kidney



Rabbit Anti-JMJD2B Antibody
Catalog Number: ARP58207
Lot Number: QC26164
Lane: Fetal Kidney Lysate

Antibody Titration: 1.0µg/ml
Gel Concentration: 6-18%

Western Blotting

Image 2. WB Suggested Anti-JMJD2B
Antibody Titration: 0.2-1 µg/mL ELISA Titer: 1:1562500
Positive Control: Human kidney