

Datasheet for ABIN2787601
anti-IMPA2 antibody (Middle Region)[Go to Product page](#)

1 Image

Overview

Quantity:	100 µL
Target:	IMPA2
Binding Specificity:	Middle Region
Reactivity:	Human, Mouse, Rat, Cow, Horse, Rabbit, Dog, Guinea Pig
Host:	Rabbit
Clonality:	Polyclonal
Conjugate:	This IMPA2 antibody is un-conjugated
Application:	Western Blotting (WB)

Product Details

Immunogen:	The immunogen is a synthetic peptide directed towards the middle region of human IMPA2
Sequence:	RGRGAFcNGQ RLRVSGETDL SKALVLTEIG PKRDPATLKL FLSNMERLLH
Predicted Reactivity:	Cow: 100%, Dog: 93%, Guinea Pig: 86%, Horse: 86%, Human: 100%, Mouse: 85%, Rabbit: 85%, Rat: 85%
Characteristics:	This is a rabbit polyclonal antibody against IMPA2. It was validated on Western Blot using a cell lysate as a positive control.
Purification:	Affinity Purified

Target Details

Target:	IMPA2
---------	-------

Target Details

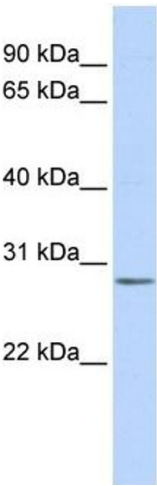
Alternative Name:	IMPA2 (IMPA2 Products)
Background:	<p>IMPA2 belongs to the inositol monophosphatase family. The present study suggests that a promoter haplotype of IMPA2 possibly contributes to risk for bipolar disorder by elevating IMPA2 levels in the brain, albeit the genetic effect varies among populations.</p> <p>Alias Symbols: -</p> <p>Protein Interaction Partner: UBA3, IMPA2, IMPA1, UBC, TNFRSF14, HERPUD1,</p> <p>Protein Size: 288</p>
Molecular Weight:	32 kDa
Gene ID:	3613
NCBI Accession:	NM_014214 , NP_055029
UniProt:	O14732

Application Details

Application Notes:	Optimal working dilutions should be determined experimentally by the investigator.
Comment:	Antigen size: 288 AA
Restrictions:	For Research Use only

Handling

Format:	Liquid
Concentration:	Lot specific
Buffer:	Liquid. Purified antibody supplied in 1x PBS buffer with 0.09 % (w/v) sodium azide and 2 % sucrose.
Preservative:	Sodium azide
Precaution of Use:	This product contains Sodium azide: a POISONOUS AND HAZARDOUS SUBSTANCE which should be handled by trained staff only.
Handling Advice:	Avoid repeated freeze-thaw cycles.
Storage:	-20 °C
Storage Comment:	For short term use, store at 2-8°C up to 1 week. For long term storage, store at -20°C in small aliquots to prevent freeze-thaw cycles.



Western Blotting

Image 1. WB Suggested Anti-IMPA2 Antibody Titration:

0.2-1 ug/ml

ELISA Titer: 1:312500

Positive Control: Human Lung