

Datasheet for ABIN2787612
anti-ACIN1 antibody (C-Term)



[Go to Product page](#)

1 Image

Overview

Quantity:	100 µL
Target:	ACIN1
Binding Specificity:	C-Term
Reactivity:	Human, Mouse, Rat, Dog, Cow, Horse, Guinea Pig, Rabbit, Zebrafish (Danio rerio)
Host:	Rabbit
Clonality:	Polyclonal
Conjugate:	This ACIN1 antibody is un-conjugated
Application:	Western Blotting (WB)

Product Details

Immunogen:	The immunogen is a synthetic peptide directed towards the C-terminal region of Mouse Acin1
Sequence:	RSEREWDRDK VREGPRSRSR SRDRRRKERA KSKEKKSEKK EKAQEPPAK
Predicted Reactivity:	Cow: 100%, Dog: 100%, Guinea Pig: 100%, Horse: 100%, Human: 100%, Mouse: 100%, Rabbit: 100%, Rat: 100%, Zebrafish: 79%
Characteristics:	This is a rabbit polyclonal antibody against Acin1. It was validated on Western Blot.
Purification:	Affinity Purified

Target Details

Target:	ACIN1
Alternative Name:	Acin1 (ACIN1 Products)

Target Details

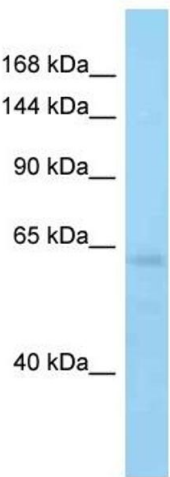
Background:	The function of this protein remains unknown. Alias Symbols: 2610036I19Rik, 2610510L13Rik, Acinus, Acn, C79325, acinusL, acinusS, mKIAA0670 Protein Interaction Partner: Foxp3, Pou5f1, Protein Size: 552
Molecular Weight:	60 kDa
Gene ID:	56215
NCBI Accession:	NM_001242606 , NP_001229535
UniProt:	Q52KR6

Application Details

Application Notes:	Optimal working dilutions should be determined experimentally by the investigator.
Comment:	Antigen size: 552 AA
Restrictions:	For Research Use only

Handling

Format:	Liquid
Concentration:	Lot specific
Buffer:	Liquid. Purified antibody supplied in 1x PBS buffer with 0.09 % (w/v) sodium azide and 2 % sucrose.
Preservative:	Sodium azide
Precaution of Use:	This product contains Sodium azide: a POISONOUS AND HAZARDOUS SUBSTANCE which should be handled by trained staff only.
Handling Advice:	Avoid repeated freeze-thaw cycles.
Storage:	-20 °C
Storage Comment:	For short term use, store at 2-8°C up to 1 week. For long term storage, store at -20°C in small aliquots to prevent freeze-thaw cycles.



Western Blotting

Image 1. Host: Rabbit Target Name: Acin1 Sample Type: Mouse Brain lysates Antibody Dilution: 1.0ug/ml