

Datasheet for ABIN2787613  
**anti-ASF1A antibody (N-Term)**[Go to Product page](#)

## 2 Images

## Overview

Quantity:	100 µL
Target:	ASF1A
Binding Specificity:	N-Term
Reactivity:	Human, Mouse, Rat, Dog, Cow, Sheep, Rabbit, Pig, Goat, Zebrafish (Danio rerio)
Host:	Rabbit
Clonality:	Polyclonal
Conjugate:	This ASF1A antibody is un-conjugated
Application:	Western Blotting (WB)

## Product Details

Immunogen:	The immunogen is a synthetic peptide directed towards the N terminal region of human ASF1A
Sequence:	MAKVQVNNVV VLDNPSPFYN PFQFEITFEC IEDLSEDLEW KIIYVGSAES
Predicted Reactivity:	Cow: 100%, Dog: 100%, Goat: 79%, Human: 100%, Mouse: 100%, Pig: 100%, Rabbit: 100%, Rat: 100%, Sheep: 100%, Zebrafish: 93%
Characteristics:	This is a rabbit polyclonal antibody against ASF1A. It was validated on Western Blot.
Purification:	Affinity Purified

## Target Details

Target:	ASF1A
Alternative Name:	ASF1A ( <a href="#">ASF1A Products</a> )

## Target Details

Background:	<p>This gene encodes a member of the H3/H4 family of histone chaperone proteins and is similar to the anti-silencing function-1 gene in yeast. The protein is a key component of a histone donor complex that functions in nucleosome assembly. It interacts with histones H3 and H4, and functions together with a chromatin assembly factor during DNA replication and repair.</p> <p>Alias Symbols: CGI-98, CIA, DKFZp547E2110, HSPC146</p> <p>Protein Interaction Partner: PRR3, HIST1H4L, PML, UBC, BTRC, CUL1, SARS, HIST3H3, H3F3A, TLK1, MMS22L, TONSL, HIST4H4, hist1h4a, hist1h3g, HIST1H3A, RBBP4, NASP, HIST1H4F, UBN1, RBBP7, MCM7, MCM6, MCM4, MCM2, CDAN1, IPO4, ASF1B, TLK2, HIST1H3E, HIRA, TAF1, HTATIP2, CAC2, CHAF1B, TP73</p> <p>Protein Size: 204</p>
Molecular Weight:	23 kDa
Gene ID:	25842
NCBI Accession:	<a href="#">NM_014034</a> , <a href="#">NP_054753</a>
UniProt:	<a href="#">Q9Y294</a>

## Application Details

Application Notes:	Optimal working dilutions should be determined experimentally by the investigator.
Comment:	Antigen size: 204 AA
Restrictions:	For Research Use only

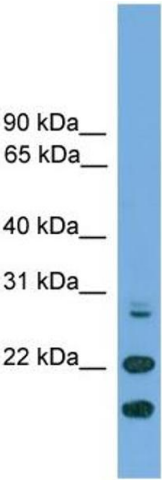
## Handling

Format:	Liquid
Concentration:	Lot specific
Buffer:	Liquid. Purified antibody supplied in 1x PBS buffer with 0.09 % (w/v) sodium azide and 2 % sucrose.
Preservative:	Sodium azide
Precaution of Use:	This product contains Sodium azide: a POISONOUS AND HAZARDOUS SUBSTANCE which should be handled by trained staff only.
Handling Advice:	Avoid repeated freeze-thaw cycles.
Storage:	-20 °C

Handling

Storage Comment: For short term use, store at 2-8°C up to 1 week. For long term storage, store at -20°C in small aliquots to prevent freeze-thaw cycles.

Images



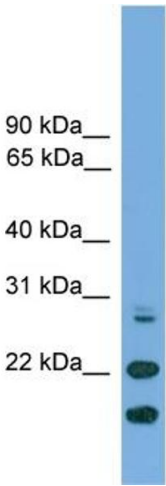
Western Blotting

Image 1. WB Suggested Anti-ASF1A Antibody Titration:

0.2-1 ug/ml

ELISA Titer: 1:312500

Positive Control: THP-1 cell lysate



Rabbit Anti-ASF1A Antibody  
Catalog Number: ARP58260  
Lot Number: QC24181  
Lane: THP-1 Cell Lysate

Antibody Titration: 1.0µg/ml  
Gel Concentration: 12%

Western Blotting

Image 2. WB Suggested Anti-ASF1A

Antibody Titration: 0.2-1 µg/mL ELISA Titer: 1:12500

Positive Control: THP-1 cell lysate