

Datasheet for ABIN2787618  
**anti-ERCC4 antibody (Middle Region)**[Go to Product page](#)

## 2 Images

## Overview

Quantity:	100 µL
Target:	ERCC4
Binding Specificity:	Middle Region
Reactivity:	Human, Rat, Dog, Horse
Host:	Rabbit
Clonality:	Polyclonal
Conjugate:	This ERCC4 antibody is un-conjugated
Application:	Western Blotting (WB)

## Product Details

Immunogen:	The immunogen is a synthetic peptide directed towards the middle region of human ERCC4
Sequence:	FLLRLYRKTF EKDSKAEVW MKFRKEDSSK RIRKSHKRPK DPQNKERAST
Predicted Reactivity:	Dog: 83%, Horse: 85%, Human: 100%, Rat: 85%
Characteristics:	This is a rabbit polyclonal antibody against ERCC4. It was validated on Western Blot using a cell lysate as a positive control.
Purification:	Affinity Purified

## Target Details

Target:	ERCC4
Alternative Name:	ERCC4 ( <a href="#">ERCC4 Products</a> )

## Target Details

Background:	<p>The protein encoded by this gene forms a complex with ERCC1 and is involved in the 5' incision made during nucleotide excision repair. This complex is a structure specific DNA repair endonuclease that interacts with EME1. Defects in this gene are a cause</p> <p>Alias Symbols: RAD1, XPF, ERCC11</p> <p>Protein Interaction Partner: vpr, SLX4, UBC, MSH2, ERCC1, ALYREF, VPS26A, UBE2B, SLX1A, POLR2A, SUMO2, GTF2H1, SPTAN1, ERCC6, TADA2A, FANCG, PLK1, SLX4IP, SLX1B, RAD52, SPTA1, FANCA,</p> <p>Protein Size: 916</p>
Molecular Weight:	101 kDa
Gene ID:	2072
NCBI Accession:	<a href="#">NM_005236</a> , <a href="#">NP_005227</a>
UniProt:	<a href="#">Q92889</a>
Pathways:	<a href="#">DNA Damage Repair</a>

## Application Details

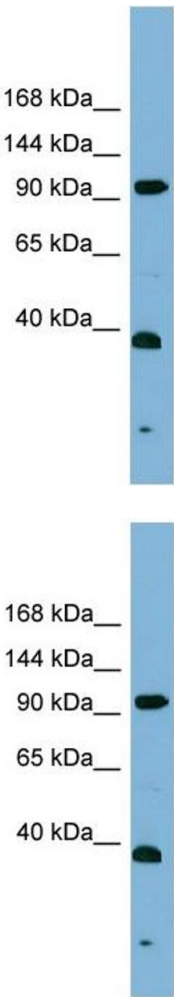
Application Notes:	Optimal working dilutions should be determined experimentally by the investigator.
Comment:	Antigen size: 916 AA
Restrictions:	For Research Use only

## Handling

Format:	Liquid
Concentration:	Lot specific
Buffer:	Liquid. Purified antibody supplied in 1x PBS buffer with 0.09 % (w/v) sodium azide and 2 % sucrose.
Preservative:	Sodium azide
Precaution of Use:	This product contains Sodium azide: a POISONOUS AND HAZARDOUS SUBSTANCE which should be handled by trained staff only.
Handling Advice:	Avoid repeated freeze-thaw cycles.
Storage:	-20 °C
Storage Comment:	For short term use, store at 2-8°C up to 1 week. For long term storage, store at -20°C in small

aliquots to prevent freeze-thaw cycles.

Images



**Western Blotting**

**Image 1. WB Suggested Anti-ERCC4 Antibody Titration:**  
0.2-1 ug/ml  
**ELISA Titer:** 1:312500  
**Positive Control:** PANC1 cell lysate

**Western Blotting**

**Image 2. WB Suggested Anti-ERCC4**  
Antibody Titration: 0.2-1 µg/mL ELISA Titer: 1:12500  
Positive Control: PANC1 cell lysate  
ERCC4 is supported by BioGPS gene expression data to be expressed in PANC1