

Datasheet for ABIN2787632
anti-POT1 antibody (Middle Region)[Go to Product page](#)

2 Images

Overview

Quantity:	100 µL
Target:	POT1
Binding Specificity:	Middle Region
Reactivity:	Human, Mouse, Rat, Guinea Pig, Horse, Dog, Cow, Pig, Rabbit, Zebrafish (Danio rerio)
Host:	Rabbit
Clonality:	Polyclonal
Conjugate:	This POT1 antibody is un-conjugated
Application:	Western Blotting (WB)

Product Details

Immunogen:	The immunogen is a synthetic peptide directed towards the middle region of human POT1
Sequence:	MNSENQTMLS LEFHLHGGTS YGRGIRVLPE SNSDVDQLKK DLESANLTAN
Predicted Reactivity:	Cow: 86%, Dog: 93%, Guinea Pig: 86%, Horse: 93%, Human: 100%, Mouse: 86%, Pig: 93%, Rabbit: 93%, Rat: 93%, Zebrafish: 100%
Characteristics:	This is a rabbit polyclonal antibody against POT1. It was validated on Western Blot.
Purification:	Affinity Purified

Target Details

Target:	POT1
Alternative Name:	POT1 (POT1 Products)

Target Details

Background:	<p>This gene is a member of the telombin family and encodes a nuclear protein involved in telomere maintenance. Specifically, this protein functions as a member of a multi-protein complex that binds to the TTAGGG repeats of telomeres, regulating telomere length and protecting chromosome ends from illegitimate recombination, catastrophic chromosome instability, and abnormal chromosome segregation. Increased transcriptional expression of this gene is associated with stomach carcinogenesis and its progression. Alternatively spliced transcript variants have been described.</p> <p>Alias Symbols: DKFZP586D211, hPot1, HPOT1</p> <p>Protein Interaction Partner: TPP1, CFL2, ACD, CORO1A, KHDRBS1, LAMC3, BCAS2, MVP, ZNF32, ECI1, CSNK2B, COX6A2, ALDH1A1, ACTN4, SERTAD1, C2orf74, ZBTB49, ZBED2, CYP4F11, MYO5C, RIF1, NAP1L1, MDM2, KRT18, GRN, PACSIN1, SULT4A1, PGLS, AIPL1, SH3BP1, HAAO, NCDN, TWF2, ACOT7, DDX19B, PACS</p> <p>Protein Size: 634</p>
Molecular Weight:	70 kDa
Gene ID:	25913
NCBI Accession:	NM_015450 , NP_056265
UniProt:	Q9NUX5
Pathways:	Cell Division Cycle , Telomere Maintenance

Application Details

Application Notes:	Optimal working dilutions should be determined experimentally by the investigator.
Comment:	Antigen size: 634 AA
Restrictions:	For Research Use only

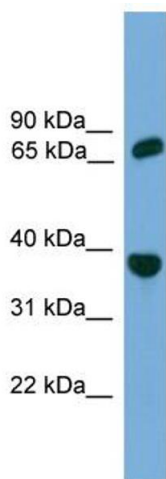
Handling

Format:	Liquid
Concentration:	Lot specific
Buffer:	Liquid. Purified antibody supplied in 1x PBS buffer with 0.09 % (w/v) sodium azide and 2 % sucrose.
Preservative:	Sodium azide
Precaution of Use:	This product contains Sodium azide: a POISONOUS AND HAZARDOUS SUBSTANCE which

Handling

	should be handled by trained staff only.
Handling Advice:	Avoid repeated freeze-thaw cycles.
Storage:	-20 °C
Storage Comment:	For short term use, store at 2-8°C up to 1 week. For long term storage, store at -20°C in small aliquots to prevent freeze-thaw cycles.

Images

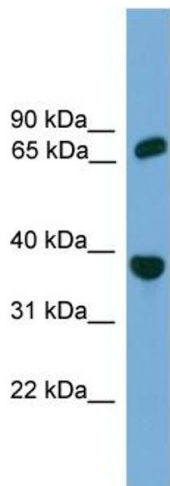


Western Blotting

Image 1. WB Suggested Anti-POT1 Antibody Titration: 0.2-1 ug/ml

ELISA Titer: 1:1562500

Positive Control: THP-1 cell lysate



Rabbit Anti-POT1 Antibody
Catalog Number: ARP58317
Lot Number: QC24507
Lane: THP-1 Cell Lysate

Antibody Titration: 1.0µg/ml
Gel Concentration: 12%

Western Blotting

Image 2. WB Suggested Anti-POT1
Antibody Titration: 0.2-1 µg/mL ELISA Titer: 1:1562500
Positive Control: THP-1 cell lysate