

Datasheet for ABIN2787639  
**anti-SYCP1 antibody (N-Term)**

## 2 Images

[Go to Product page](#)

## Overview

Quantity:	100 µL
Target:	SYCP1
Binding Specificity:	N-Term
Reactivity:	Human, Mouse, Rat, Guinea Pig, Horse, Pig, Rabbit, Cow, Dog
Host:	Rabbit
Clonality:	Polyclonal
Conjugate:	This SYCP1 antibody is un-conjugated
Application:	Western Blotting (WB), Immunohistochemistry (IHC)

## Product Details

Immunogen:	The immunogen is a synthetic peptide directed towards the N terminal region of human SYCP1
Sequence:	NFLPVLEQVG NSDCHYQEG LKSDLENSEG LSRVYSKLYK EAEIKKKWKV
Predicted Reactivity:	Cow: 93%, Dog: 93%, Guinea Pig: 86%, Horse: 93%, Human: 100%, Mouse: 79%, Pig: 93%, Rabbit: 93%, Rat: 79%
Characteristics:	This is a rabbit polyclonal antibody against SYCP1. It was validated on Western Blot using a cell lysate as a positive control.
Purification:	Affinity Purified

## Target Details

Target:	SYCP1
---------	-------

## Target Details

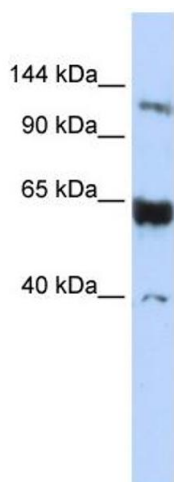
Alternative Name:	SYCP1 ( <a href="#">SYCP1 Products</a> )
Background:	<p>SYCP1 is a major component of the transverse filaments of synaptonemal complexes (SCS), which is formed between homologous chromosomes during meiotic prophase.</p> <p>Alias Symbols: HOM-TES-14, MGC104417, SCP1, CT8</p> <p>Protein Interaction Partner: UBC, Uba1,</p> <p>Protein Size: 976</p>
Molecular Weight:	107 kDa
Gene ID:	6847
NCBI Accession:	<a href="#">NM_003176</a> , <a href="#">NP_003167</a>
UniProt:	<a href="#">Q15431</a>

## Application Details

Application Notes:	Optimal working dilutions should be determined experimentally by the investigator.
Comment:	Antigen size: 976 AA
Restrictions:	For Research Use only

## Handling

Format:	Liquid
Concentration:	Lot specific
Buffer:	Liquid. Purified antibody supplied in 1x PBS buffer with 0.09 % (w/v) sodium azide and 2 % sucrose.
Preservative:	Sodium azide
Precaution of Use:	This product contains Sodium azide: a POISONOUS AND HAZARDOUS SUBSTANCE which should be handled by trained staff only.
Handling Advice:	Avoid repeated freeze-thaw cycles.
Storage:	-20 °C
Storage Comment:	For short term use, store at 2-8°C up to 1 week. For long term storage, store at -20°C in small aliquots to prevent freeze-thaw cycles.



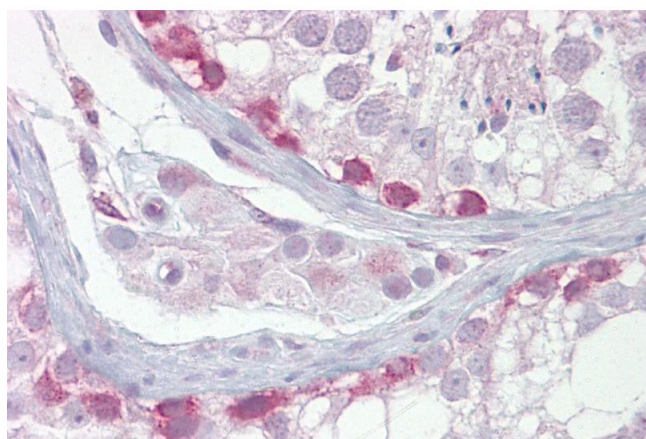
#### Western Blotting

##### Image 1. WB Suggested Anti-SYCP1 Antibody Titration:

0.2-1 ug/ml

**ELISA Titer:** 1:312500

**Positive Control:** Jurkat cell lysate



#### Immunohistochemistry

**Image 2.** Immunohistochemistry with Testis tissue at an antibody concentration of 5µg/ml using anti-SYCP1 antibody (ARP58330\_P050)