

Datasheet for ABIN2787640
anti-SYCP3 antibody (N-Term)[Go to Product page](#)

2 Images

Overview

Quantity:	100 µL
Target:	SYCP3
Binding Specificity:	N-Term
Reactivity:	Human
Host:	Rabbit
Clonality:	Polyclonal
Conjugate:	This SYCP3 antibody is un-conjugated
Application:	Western Blotting (WB), Immunohistochemistry (IHC)

Product Details

Immunogen:	The immunogen is a synthetic peptide directed towards the N terminal region of human SYCP3
Sequence:	VSSGKKYSRK SGKPSVEDQF TRAYDFETED KKDLSGSEED VIEGKTAVIE
Predicted Reactivity:	Human: 100%
Characteristics:	This is a rabbit polyclonal antibody against SYCP3. It was validated on Western Blot using a cell lysate as a positive control.
Purification:	Affinity Purified

Target Details

Target:	SYCP3
Alternative Name:	SYCP3 (SYCP3 Products)

Target Details

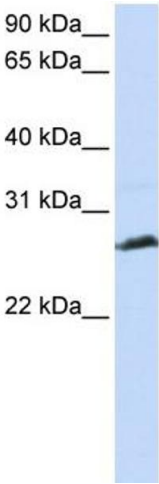
Background:	<p>SYCP3 is a component of the transverse filaments of synaptonemal complexes (SCS), formed between homologous chromosomes during meiotic prophase. It has an essential meiotic function in spermatogenesis. SYCP3 may be important for testis development.</p> <p>Alias Symbols: COR1, MGC71888, SCP3, SPGF4</p> <p>Protein Interaction Partner: LIG4, PABPC1, REC8, SMC3, SMC1A,</p> <p>Protein Size: 236</p>
Molecular Weight:	26 kDa
Gene ID:	50511
NCBI Accession:	NM_153694 , NP_710161
UniProt:	Q8IZU3

Application Details

Application Notes:	Optimal working dilutions should be determined experimentally by the investigator.
Comment:	Antigen size: 236 AA
Restrictions:	For Research Use only

Handling

Format:	Liquid
Concentration:	Lot specific
Buffer:	Liquid. Purified antibody supplied in 1x PBS buffer with 0.09 % (w/v) sodium azide and 2 % sucrose.
Preservative:	Sodium azide
Precaution of Use:	This product contains Sodium azide: a POISONOUS AND HAZARDOUS SUBSTANCE which should be handled by trained staff only.
Handling Advice:	Avoid repeated freeze-thaw cycles.
Storage:	-20 °C
Storage Comment:	For short term use, store at 2-8°C up to 1 week. For long term storage, store at -20°C in small aliquots to prevent freeze-thaw cycles.



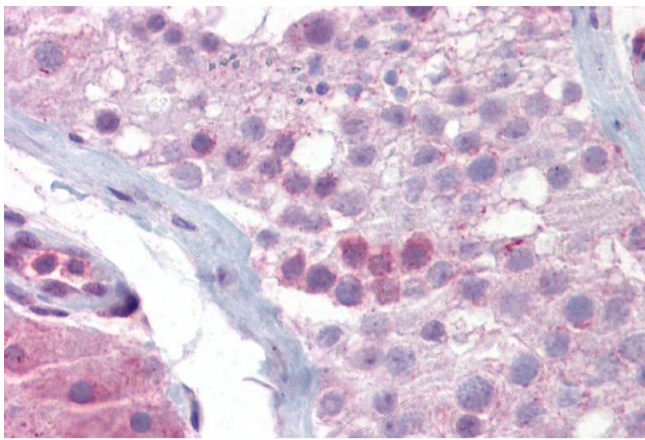
Western Blotting

Image 1. WB Suggested Anti-SYCP3 Antibody Titration:

0.2-1 ug/ml

ELISA Titer: 1:312500

Positive Control: Jurkat cell lysate



Immunohistochemistry

Image 2. Immunohistochemistry with Testis tissue at an antibody concentration of 5µg/ml using anti-SYCP3 antibody (ARP58334_P050)