

Datasheet for ABIN2787649
anti-ZW10 antibody (N-Term)[Go to Product page](#)

2 Images

Overview

Quantity:	100 µL
Target:	ZW10
Binding Specificity:	N-Term
Reactivity:	Human, Rat, Cow, Guinea Pig, Horse, Rabbit, Dog
Host:	Rabbit
Clonality:	Polyclonal
Conjugate:	This ZW10 antibody is un-conjugated
Application:	Western Blotting (WB)

Product Details

Immunogen:	The immunogen is a synthetic peptide directed towards the N terminal region of human ZW10
Sequence:	DLLKSRIESE VRRDLHVSTG EFTDLKQQLE RDSVLSLLK QLQEFSTAIE
Predicted Reactivity:	Cow: 86%, Dog: 93%, Guinea Pig: 93%, Horse: 93%, Human: 100%, Rabbit: 93%, Rat: 93%
Characteristics:	This is a rabbit polyclonal antibody against ZW10. It was validated on Western Blot using a cell lysate as a positive control.
Purification:	Affinity Purified

Target Details

Target:	ZW10
Alternative Name:	ZW10 (ZW10 Products)

Target Details

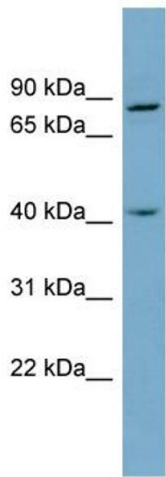
Background:	<p>This gene encodes a protein that is one of many involved in mechanisms to ensure proper chromosome segregation during cell division. The encoded protein binds to centromeres during the prophase, metaphase, and early anaphase cell division stages and to ki</p> <p>Alias Symbols: HZW10, KNTC1AP, MGC149821</p> <p>Protein Interaction Partner: UBC, KIAA0196, ROCK2, PSMD10, NHP2L1, LMNA, EEF1D, EGFR, C19orf25, RINT1, ZWILCH, ZWINT, KNTC1, MAD1L1, MAD2L1, FN1, UGGT1, CLASP1, HDLBP, APP, PIAS4, Zw10, DCTN2, STX18, GSTK1, PHLDA3,</p> <p>Protein Size: 779</p>
Molecular Weight:	86 kDa
Gene ID:	9183
NCBI Accession:	NM_004724 , NP_004715
UniProt:	O43264

Application Details

Application Notes:	Optimal working dilutions should be determined experimentally by the investigator.
Comment:	Antigen size: 779 AA
Restrictions:	For Research Use only

Handling

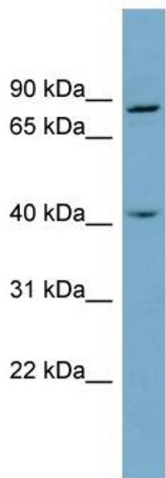
Format:	Liquid
Concentration:	Lot specific
Buffer:	Liquid. Purified antibody supplied in 1x PBS buffer with 0.09 % (w/v) sodium azide and 2 % sucrose.
Preservative:	Sodium azide
Precaution of Use:	This product contains Sodium azide: a POISONOUS AND HAZARDOUS SUBSTANCE which should be handled by trained staff only.
Handling Advice:	Avoid repeated freeze-thaw cycles.
Storage:	-20 °C
Storage Comment:	For short term use, store at 2-8°C up to 1 week. For long term storage, store at -20°C in small aliquots to prevent freeze-thaw cycles.



Western Blotting

Image 1. WB Suggested Anti-ZW10 Antibody Titration:
0.2-1 ug/ml

Positive Control: PANC1 cell lysate



Rabbit Anti-ZW10 Antibody
Catalog Number: ARP58358
Lot Number: QC24536
Lane: PANC1 Cell Lysate

Antibody Titration: 1.0µg/ml
Gel Concentration: 12%

Western Blotting

Image 2. WB Suggested Anti-ZW10
Antibody Titration: 0.2-1 µg/mL
Positive Control: PANC1 cell lysate