

Datasheet for ABIN2787674  
**anti-SNAP47 antibody (Middle Region)**[Go to Product page](#)

## 2 Images

## Overview

Quantity:	100 µL
Target:	SNAP47
Binding Specificity:	Middle Region
Reactivity:	Human, Rat, Mouse, Cow, Horse, Pig, Rabbit, Saccharomyces cerevisiae, Zebrafish (Danio rerio)
Host:	Rabbit
Clonality:	Polyclonal
Conjugate:	This SNAP47 antibody is un-conjugated
Application:	Western Blotting (WB)

## Product Details

Immunogen:	The immunogen is a synthetic peptide directed towards the middle region of human C1orf142
Sequence:	TALHLQTSLP ALSEADTQEL TQILRRMKGL ALEAESELER QDEALDGVA
Predicted Reactivity:	Cow: 86%, Horse: 86%, Human: 100%, Mouse: 79%, Pig: 92%, Rabbit: 86%, Rat: 79%, Yeast: 75%, Zebrafish: 92%
Characteristics:	This is a rabbit polyclonal antibody against C1orf142. It was validated on Western Blot using a cell lysate as a positive control.
Purification:	Affinity Purified

## Target Details

Target:	SNAP47
---------	--------

## Target Details

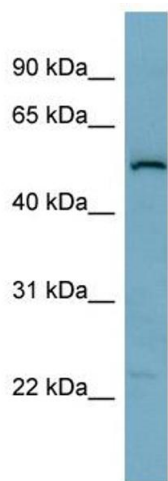
Alternative Name:	C1orf142 ( <a href="#">SNAP47 Products</a> )
Background:	<p>The function of this protein remains unknown.</p> <p>Alias Symbols: DKFZp686M10160, FLJ12517, IMAGE3451454, SNAP-47, SVAP1, HEL170, C1orf142</p> <p>Protein Interaction Partner: CEP57L1, FAM9B, KLC3, FATE1, MID2, SPAG5, STX4, MAGEA6, GOLGA2, UBC, UBD,</p> <p>Protein Size: 464</p>
Molecular Weight:	51 kDa
Gene ID:	116841
NCBI Accession:	<a href="#">NM_138812</a> , <a href="#">NP_444280</a>
UniProt:	<a href="#">Q5SQN1</a>

## Application Details

Application Notes:	Optimal working dilutions should be determined experimentally by the investigator.
Comment:	Antigen size: 464 AA
Restrictions:	For Research Use only

## Handling

Format:	Liquid
Concentration:	Lot specific
Buffer:	Liquid. Purified antibody supplied in 1x PBS buffer with 0.09 % (w/v) sodium azide and 2 % sucrose.
Preservative:	Sodium azide
Precaution of Use:	This product contains Sodium azide: a POISONOUS AND HAZARDOUS SUBSTANCE which should be handled by trained staff only.
Handling Advice:	Avoid repeated freeze-thaw cycles.
Storage:	-20 °C
Storage Comment:	For short term use, store at 2-8°C up to 1 week. For long term storage, store at -20°C in small aliquots to prevent freeze-thaw cycles.



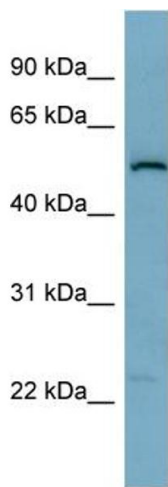
Western Blotting

**Image 1. WB Suggested Anti-C1orf142 Antibody Titration:**

0.2-1 ug/ml

**ELISA Titer:** 1:12500

**Positive Control:** PANC1 cell lysate



Rabbit Anti-C1orf142 Antibody  
Catalog Number: ARP58429  
Lot Number: QC25510  
Lane: PANC1 Cell Lysate

Antibody Titration: 1.0µg/ml  
Gel Concentration: 12%

Western Blotting

**Image 2. WB Suggested Anti-C1orf142**

Antibody Titration: 0.2-1 µg/mL ELISA Titer: 1:12500

Positive Control: PANC1 cell lysate