

Datasheet for ABIN2787678  
**anti-Calpain S1 antibody (Middle Region)**[Go to Product page](#)[1 Image](#)[1 Publication](#)

## Overview

Quantity:	100 µL
Target:	Calpain S1 (CAPNS1)
Binding Specificity:	Middle Region
Reactivity:	Human, Mouse, Rat, Cow, Rabbit, Pig, Dog, Guinea Pig, Horse, Sheep
Host:	Rabbit
Clonality:	Polyclonal
Conjugate:	This Calpain S1 antibody is un-conjugated
Application:	Western Blotting (WB)

## Product Details

Immunogen:	The immunogen is a synthetic peptide directed towards the middle region of human CAPNS1
Sequence:	RRYSDESGNM DFDNFISCLV RLDAMFRAFK SLDKDG TGQI QVNIQEWLQL
Predicted Reactivity:	Cow: 100%, Dog: 93%, Guinea Pig: 93%, Horse: 93%, Human: 100%, Mouse: 93%, Pig: 100%, Rabbit: 100%, Rat: 100%, Sheep: 100%
Characteristics:	This is a rabbit polyclonal antibody against CAPNS1. It was validated on Western Blot using a cell lysate as a positive control.
Purification:	Affinity Purified

## Target Details

Target:	Calpain S1 (CAPNS1)
---------	---------------------

## Target Details

Alternative Name:	CAPNS1 ( <a href="#">CAPNS1 Products</a> )
Background:	<p>Calpains are a ubiquitous, well-conserved family of calcium-dependent, cysteine proteases. Calpain families have been implicated in neurodegenerative processes, as their activation can be triggered by calcium influx and oxidative stress. Calpain I and II are heterodimeric with distinct large subunits associated with common small subunits, all of which are encoded by different genes. This gene encodes a small subunit common to both calpain I and II and is associated with myotonic dystrophy. Two transcript variants encoding the same protein have been identified for this gene.</p> <p>Alias Symbols: 30K, CALPAIN4, CANP, CANPS, CAPN4, CDPS, CSS1</p> <p>Protein Interaction Partner: AGTRAP, HUWE1, NEDD1, TUBGCP2, TUBGCP3, CDC20, UBC, OGFOD1, STK26, ISOC1, DCPS, MAT2B, PROSC, FERMT2, YWHAQ, PDIA4, YWHAZ, YWHAH, YWHAG, YWHAE, PTMA, PPP1CA, PAK2, PAFAH1B1, MYO1E, MAT2A, GNAI3, GAPDH, EIF5, TBCB, ALDH7A1, ASNS, APEX1, ADRB2, PPARGC1A, VC</p> <p>Protein Size: 268</p>
Molecular Weight:	29 kDa
Gene ID:	826
NCBI Accession:	<a href="#">NM_001003962</a> , <a href="#">NP_001003962</a>
UniProt:	<a href="#">P04632</a>
Pathways:	<a href="#">Apoptosis</a>

## Application Details

Application Notes:	Optimal working dilutions should be determined experimentally by the investigator.
Comment:	Antigen size: 268 AA
Restrictions:	For Research Use only

## Handling

Format:	Liquid
Concentration:	Lot specific
Buffer:	Liquid. Purified antibody supplied in 1x PBS buffer with 0.09 % (w/v) sodium azide and 2 % sucrose.
Preservative:	Sodium azide

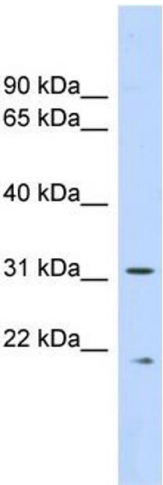
## Handling

Precaution of Use:	This product contains Sodium azide: a POISONOUS AND HAZARDOUS SUBSTANCE which should be handled by trained staff only.
Handling Advice:	Avoid repeated freeze-thaw cycles.
Storage:	-20 °C
Storage Comment:	For short term use, store at 2-8°C up to 1 week. For long term storage, store at -20°C in small aliquots to prevent freeze-thaw cycles.

## Publications

Product cited in:	Stouffs, Tournaye, Van der Elst, Haentjens, Liebaers, Lissens: "Do we need to search for gr/gr deletions in infertile men in a clinical setting?" in: <b>Human reproduction (Oxford, England)</b> , Vol. 23, Issue 5, pp. 1193-9, (2008) ( <a href="#">PubMed</a> ).
-------------------	--

## Images



### Western Blotting

**Image 1.** WB Suggested Anti-CAPNS1 Antibody Titration: 0.2-1 ug/ml ELISA Titer: 1:62500 Positive Control: Human Lung