

Datasheet for ABIN2787685  
**anti-CPE antibody (N-Term)**

## 2 Images

[Go to Product page](#)

## Overview

Quantity:	100 µL
Target:	CPE
Binding Specificity:	N-Term
Reactivity:	Human, Mouse, Rat, Cow, Guinea Pig, Rabbit, Zebrafish (Danio rerio)
Host:	Rabbit
Clonality:	Polyclonal
Conjugate:	This CPE antibody is un-conjugated
Application:	Western Blotting (WB), Immunohistochemistry (IHC)

## Product Details

Immunogen:	The immunogen is a synthetic peptide directed towards the N terminal region of human CPE
Sequence:	GMRRRRRLQQ EDGISFEYHR YPELREALVS VWLQCTAISR IYTVGRSFEG
Predicted Reactivity:	Cow: 100%, Guinea Pig: 100%, Human: 100%, Mouse: 100%, Rabbit: 100%, Rat: 100%, Zebrafish: 85%
Characteristics:	This is a rabbit polyclonal antibody against CPE. It was validated on Western Blot using a cell lysate as a positive control.
Purification:	Affinity Purified

## Target Details

Target:	CPE
---------	-----

## Target Details

Alternative Name:	CPE ( <a href="#">CPE Products</a> )
Background:	<p>CPE is a carboxypeptidase that cleaves C-terminal amino acid residues and is involved in the biosynthesis of peptide hormones and neurotransmitters, including insulin. It is a peripheral membrane protein. The protein specifically binds regulated secretory pathway proteins, including prohormones, but not constitutively secreted proteins. This gene encodes a carboxypeptidase that cleaves C-terminal amino acid residues and is involved in the biosynthesis of peptide hormones and neurotransmitters, including insulin. It is a peripheral membrane protein. The protein specifically binds regulated secretory pathway proteins, including prohormones, but not constitutively secreted proteins. Mutations in this gene are implicated in type II diabetes. Publication Note: This RefSeq record includes a subset of the publications that are available for this gene. Please see the Entrez Gene record to access additional publications.</p> <p>Alias Symbols: -</p> <p>Protein Interaction Partner: PRKAA1, UBC, LRIF1, POLDIP2, MED31, ROBO2, POLA2, CHD3, TRH, NTS, GTF3C1, UTP14A, RPA1, PMCH, INS, GCG, GAST, CCK, BDNF,</p> <p>Protein Size: 476</p>
Molecular Weight:	52 kDa
Gene ID:	1363
NCBI Accession:	<a href="#">NM_001873</a> , <a href="#">NP_001864</a>
UniProt:	<a href="#">P16870</a>
Pathways:	<a href="#">Peptide Hormone Metabolism</a> , <a href="#">Synaptic Membrane</a>

## Application Details

Application Notes:	Optimal working dilutions should be determined experimentally by the investigator.
Comment:	Antigen size: 476 AA
Restrictions:	For Research Use only

## Handling

Format:	Liquid
Concentration:	Lot specific
Buffer:	Liquid. Purified antibody supplied in 1x PBS buffer with 0.09 % (w/v) sodium azide and 2 %

## Handling

	sucrose.
Preservative:	Sodium azide
Precaution of Use:	This product contains Sodium azide: a POISONOUS AND HAZARDOUS SUBSTANCE which should be handled by trained staff only.
Handling Advice:	Avoid repeated freeze-thaw cycles.
Storage:	-20 °C
Storage Comment:	For short term use, store at 2-8°C up to 1 week. For long term storage, store at -20°C in small aliquots to prevent freeze-thaw cycles.

## Images



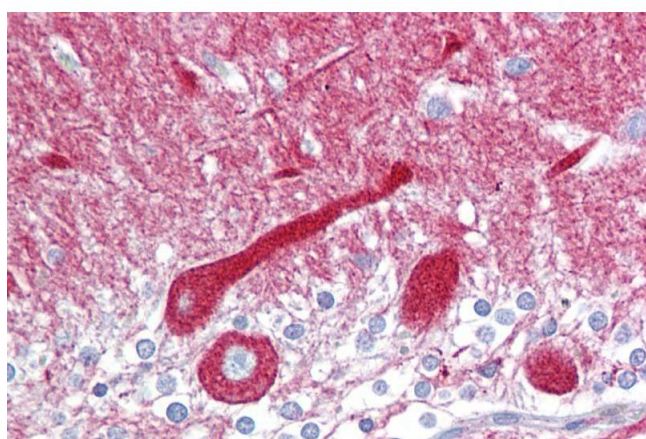
### Western Blotting

**Image 1. WB Suggested Anti-CPE Antibody Titration:** 0.2-1

ug/ml

**ELISA Titer:** 1:312500

**Positive Control:** MCF7 cell lysate



### Immunohistochemistry

**Image 2.** Immunohistochemistry with Brain, cerebellum tissue at an antibody concentration of 5µg/ml using anti-CPE antibody (ARP58445\_P050)