

Datasheet for ABIN2787690
anti-EEF2 antibody (N-Term)



[Go to Product page](#)

2 Images

Overview

Quantity:	100 µL
Target:	EEF2
Binding Specificity:	N-Term
Reactivity:	Human, Mouse, Rat, Zebrafish (Danio rerio), Cow, Dog, Guinea Pig, Horse
Host:	Rabbit
Clonality:	Polyclonal
Conjugate:	This EEF2 antibody is un-conjugated
Application:	Western Blotting (WB), Immunohistochemistry (IHC)

Product Details

Immunogen:	The immunogen is a synthetic peptide directed towards the N terminal region of human EEF2
Sequence:	TDSLVCAGI IASARAGETR FTDTRKDEQE RCITIKSTAI SLFYELSEND
Predicted Reactivity:	Cow: 100%, Dog: 100%, Guinea Pig: 100%, Horse: 100%, Human: 100%, Mouse: 100%, Rat: 100%, Zebrafish: 100%
Characteristics:	This is a rabbit polyclonal antibody against EEF2. It was validated on Western Blot using a cell lysate as a positive control.
Purification:	Affinity Purified

Target Details

Target:	EEF2
---------	------

Target Details

Alternative Name: [EEF2 \(EEF2 Products\)](#)

Background: EEF2 is a member of the GTP-binding translation elongation factor family. The protein is an essential factor for protein synthesis. It promotes the GTP-dependent translocation of the nascent protein chain from the A-site to the P-site of the ribosome. This protein is completely inactivated by EF-2 kinase phosphorylation. This gene encodes a member of the GTP-binding translation elongation factor family. This protein is an essential factor for protein synthesis. It promotes the GTP-dependent translocation of the nascent protein chain from the A-site to the P-site of the ribosome. This protein is completely inactivated by EF-2 kinase phosphorylation.

Publication Note: This RefSeq record includes a subset of the publications that are available for this gene. Please see the Entrez Gene record to access additional publications.

Alias Symbols: EEF-2, EF2, EF-2

Protein Interaction Partner: YJR129C, EEF2KMT, HUWE1, ISG15, UBC, FUS, SUMO2, SUMO3, LGR4, SUMO1, RPS6KA1, NEDD8, MDM2, RNF2, SHFM1, XPO1, EIF4H, PGD, FTO, GINS2, YWHAQ, BZW1, PFAS, PAK2, MAT2A, GSR, TYMP, CKB, CDKN2A, CASP7, CAPN1, HIPK4, CDK20, TARDBP, CDK18, HNRNPD, MAPK14, ADRB2,

Protein Size: 858

Molecular Weight: 94 kDa

Gene ID: 1938

NCBI Accession: [NM_001961](#), [NP_001952](#)

UniProt: [P13639](#)

Pathways: [AMPK Signaling](#)

Application Details

Application Notes: Optimal working dilutions should be determined experimentally by the investigator.

Comment: Antigen size: 858 AA

Restrictions: For Research Use only

Handling

Format: Liquid

Concentration: Lot specific

Buffer: Liquid. Purified antibody supplied in 1x PBS buffer with 0.09 % (w/v) sodium azide and 2 %

Handling

sucrose.

Preservative: Sodium azide

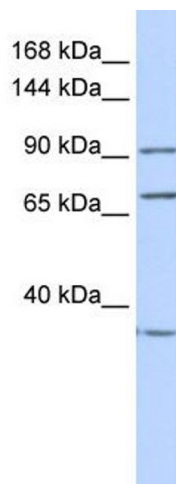
Precaution of Use: This product contains Sodium azide: a POISONOUS AND HAZARDOUS SUBSTANCE which should be handled by trained staff only.

Handling Advice: Avoid repeated freeze-thaw cycles.

Storage: -20 °C

Storage Comment: For short term use, store at 2-8°C up to 1 week. For long term storage, store at -20°C in small aliquots to prevent freeze-thaw cycles.

Images

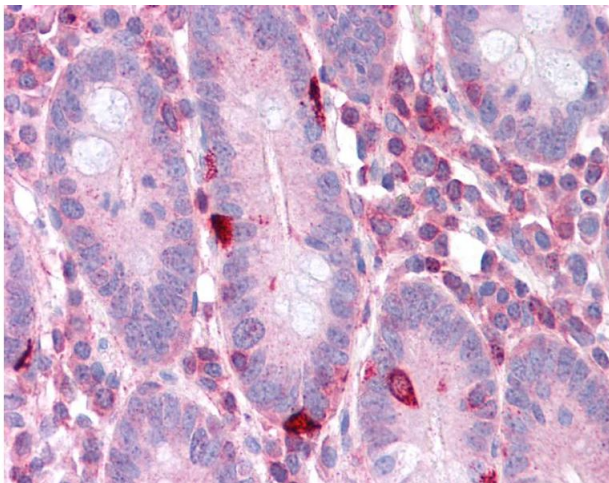


Western Blotting

Image 1. WB Suggested Anti-EEF2 Antibody Titration: 0.2-1 ug/ml

ELISA Titer: 1:312500

Positive Control: Hela cell lysate



Immunohistochemistry

Image 2.