



[Go to Product page](#)

Datasheet for ABIN2787701  
**anti-GRB2 antibody (N-Term)**

4 Images

Overview

Quantity:	100 µL
Target:	GRB2
Binding Specificity:	N-Term
Reactivity:	Human, Mouse, Rat, Cow, Dog, Zebrafish (Danio rerio), Horse, Rabbit, Guinea Pig
Host:	Rabbit
Clonality:	Polyclonal
Conjugate:	This GRB2 antibody is un-conjugated
Application:	Western Blotting (WB)

Product Details

Sequence:	AKYDFKATAD DELSFKRGDI LKVLNEECDQ NWKYKAEKNGK DGFIPKNYIE
Predicted Reactivity:	Cow: 100%, Dog: 100%, Guinea Pig: 100%, Horse: 100%, Human: 100%, Mouse: 100%, Rabbit: 100%, Rat: 100%, Zebrafish: 100%
Characteristics:	This is a rabbit polyclonal antibody against GRB2. It was validated on Western Blot.
Purification:	Affinity Purified

Target Details

Target:	GRB2
Alternative Name:	GRB2 ( <a href="#">GRB2 Products</a> )
Background:	The protein encoded by this gene binds the epidermal growth factor receptor and contains one

## Target Details

---

SH2 domain and two SH3 domains. Its two SH3 domains direct complex formation with proline-rich regions of other proteins, and its SH2 domain binds tyrosine phosphorylated sequences. This gene is similar to the Sem5 gene of *C.elegans*, which is involved in the signal transduction pathway. Two alternatively spliced transcript variants encoding different isoforms have been found for this gene.

Alias Symbols: ASH, EGFRBP-GRB2, Grb3-3, MST084, MSTP084, NCKAP2

Protein Interaction Partner: AES, C1orf94, LNX1, LZTS2, GAREM, ARHGAP9, NIF3L1, HOMEZ, DPPA4, TP53BP2, SHC1, TRIM27, REL, EPS8, HNRNPK, ERBB4, ABI3, ZBTB7B, IKZF3, INCA1, PRR22, PNMA5, STAMBP, DDX17, CBLB, LMO2, LCP2, ABL2, ABL1, NUTM2F, WBP11, GAB2, WASL, UBC, CBL, DNM1, EGFR, ACTG1

Protein Size: 217

---

Molecular Weight: 24 kDa

---

Gene ID: 2885

---

NCBI Accession: [NM\\_002086](#), [NP\\_002077](#)

---

UniProt: [P62993](#)

---

Pathways: [RTK Signaling](#), [TCR Signaling](#), [Fc-epsilon Receptor Signaling Pathway](#), [EGFR Signaling Pathway](#), [Neurotrophin Signaling Pathway](#), [Regulation of Actin Filament Polymerization](#), [Hepatitis C, Signaling Events mediated by VEGFR1 and VEGFR2](#), [Signaling of Hepatocyte Growth Factor Receptor](#), [EGFR Downregulation](#)

## Application Details

---

Application Notes: Optimal working dilutions should be determined experimentally by the investigator.

---

Comment: Antigen size: 217 AA

---

Restrictions: For Research Use only

## Handling

---

Format: Liquid

---

Concentration: Lot specific

---

Buffer: Liquid. Purified antibody supplied in 1x PBS buffer with 0.09 % (w/v) sodium azide and 2 % sucrose.

---

Preservative: Sodium azide

---

## Handling

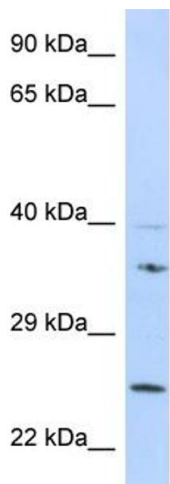
Precaution of Use:	This product contains Sodium azide: a POISONOUS AND HAZARDOUS SUBSTANCE which should be handled by trained staff only.
Handling Advice:	Avoid repeated freeze-thaw cycles.
Storage:	-20 °C
Storage Comment:	For short term use, store at 2-8°C up to 1 week. For long term storage, store at -20°C in small aliquots to prevent freeze-thaw cycles.

## Images



### Western Blotting

**Image 1.** GRB2 Antibody - N-terminal region (ARP58474\_P050) validated by WB using 721\_B cell Lysate at 1 µg/mL. GRB2 is supported by BioGPS gene expression data to be expressed in 721\_B

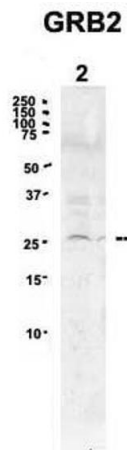


Rabbit Anti-GRB2 Antibody  
Catalog Number: ARP58474  
Lot Number: QC25800  
Lane: 721\_B Cell Lysate

Antibody Titration: 1.0 µg/ml  
Gel Concentration: 12%

### Western Blotting

**Image 2.**



See Immunoblot 2 Data for more information.

### Western Blotting

**Image 3. Sample Type:** 2. mouse brain extracts (80ug)

**Primary Antibody Dilution:** 2ug/ml

**Secondary Antibody:** IRDye 800CW goat anti-rabbit from Li-COR Bioscience

**Secondary Antibody Dilution:** 1: 20,000

**Image Submitted by:** Yuzhi Chen

University of Arkansas for Medical Science

Please check the [product details page](#) for more images. Overall 4 images are available for ABIN2787701.