



[Go to Product page](#)

Datasheet for ABIN2787704

anti-KLHL15 antibody (Middle Region)

1 Image

1 Publication

Overview

Quantity:	100 µL
Target:	KLHL15
Binding Specificity:	Middle Region
Reactivity:	Human, Mouse, Rat, Cow, Guinea Pig, Zebrafish (Danio rerio), Dog, Horse
Host:	Rabbit
Clonality:	Polyclonal
Conjugate:	This KLHL15 antibody is un-conjugated
Application:	Western Blotting (WB)

Product Details

Immunogen:	The immunogen is a synthetic peptide directed towards the middle region of human KLHL15
Sequence:	VLDKQIMVLG GLCYNGHYSD SILTFDPDEN KWKEDEYPRM PCKLDGLQVC
Predicted Reactivity:	Cow: 100%, Dog: 93%, Guinea Pig: 100%, Horse: 93%, Human: 100%, Mouse: 100%, Rat: 100%, Zebrafish: 93%
Characteristics:	This is a rabbit polyclonal antibody against KLHL15. It was validated on Western Blot using a cell lysate as a positive control.
Purification:	Affinity Purified

Target Details

Target:	KLHL15
---------	--------

Target Details

Alternative Name:	KLHL15 (KLHL15 Products)
Background:	<p>KLHL15 is a member of the kelch-like family of proteins that share a common domain structure consisting of an N-terminal broad-complex, tramtrack, bric-a-brac/poxvirus and zinc finger domain and C-terminal kelch repeat motifs. KLHL15 may be involved in protein ubiquitination and cytoskeletal organization.</p> <p>Alias Symbols: MGC126148, MGC126149</p> <p>Protein Interaction Partner: UBC, HSP90AA1, KLHL15, CUL3, PPP2R2B, PPP2R1A, PPP2CA, DCUN1D1, COPS5, COPS6, CUL5, NEDD8,</p> <p>Protein Size: 604</p>
Molecular Weight:	66 kDa
Gene ID:	80311
NCBI Accession:	NM_030624 , NP_085127
UniProt:	Q96M94

Application Details

Application Notes:	Optimal working dilutions should be determined experimentally by the investigator.
Comment:	Antigen size: 604 AA
Restrictions:	For Research Use only

Handling

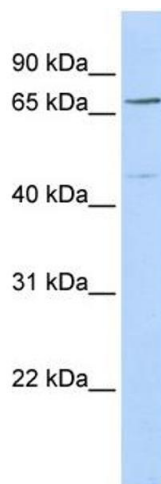
Format:	Liquid
Concentration:	Lot specific
Buffer:	Liquid. Purified antibody supplied in 1x PBS buffer with 0.09 % (w/v) sodium azide and 2 % sucrose.
Preservative:	Sodium azide
Precaution of Use:	This product contains Sodium azide: a POISONOUS AND HAZARDOUS SUBSTANCE which should be handled by trained staff only.
Handling Advice:	Avoid repeated freeze-thaw cycles.
Storage:	-20 °C
Storage Comment:	For short term use, store at 2-8°C up to 1 week. For long term storage, store at -20°C in small

aliquots to prevent freeze-thaw cycles.

Publications

Product cited in: Kenigsberg, Lima, Maghen, Wyse, Lackan, Cheung, Tsang, Librach: "The elusive MAESTRO gene: Its human reproductive tissue-specific expression pattern." in: **PLoS ONE**, Vol. 12, Issue 4, pp. e0174873, (2017) ([PubMed](#)).

Validation report #103724 for Immunohistochemistry (IHC)



Western Blotting

Image 1. WB Suggested Anti-KLHL15 Antibody Titration:

0.2-1 ug/ml

ELISA Titer: 1:312500

Positive Control: 293T cell lysate