

Datasheet for ABIN2787705
anti-KPTN antibody (N-Term)[Go to Product page](#)[1 Image](#)[1 Publication](#)

Overview

Quantity:	100 µL
Target:	KPTN
Binding Specificity:	N-Term
Reactivity:	Human, Mouse, Rat, Rabbit, Cow, Zebrafish (Danio rerio), Dog, Guinea Pig, Horse
Host:	Rabbit
Clonality:	Polyclonal
Conjugate:	This KPTN antibody is un-conjugated
Application:	Western Blotting (WB)

Product Details

Immunogen:	The immunogen is a synthetic peptide directed towards the N terminal region of human KPTN
Sequence:	MGEAAVAAGP CPLREDSFTR FSSQSNVYGL AGGAGGRGEL LAATLKGVKVL
Predicted Reactivity:	Cow: 100%, Dog: 100%, Guinea Pig: 100%, Horse: 100%, Human: 100%, Mouse: 100%, Rabbit: 100%, Rat: 100%, Zebrafish: 77%
Characteristics:	This is a rabbit polyclonal antibody against KPTN. It was validated on Western Blot using a cell lysate as a positive control.
Purification:	Affinity Purified

Target Details

Target:	KPTN
---------	------

Target Details

Alternative Name:	KPTN (KPTN Products)
Background:	<p>KPTN may be involved in actin dynamics. KPTN may play a role in producing the sensory apparatus in hair cells. KPTN may also play a role in actin rearrangements that accompany platelet activation and stereocilia formation.</p> <p>Alias Symbols: 20000</p> <p>Protein Interaction Partner: SRPK1, APP, ACTC1, RAB25, ITFG2, PKIG, TSPAN7, AUP1,</p> <p>Protein Size: 436</p>
Molecular Weight:	47 kDa
Gene ID:	11133
NCBI Accession:	NM_007059 , NP_008990
UniProt:	Q9Y664
Pathways:	Sensory Perception of Sound

Application Details

Application Notes:	Optimal working dilutions should be determined experimentally by the investigator.
Comment:	Antigen size: 436 AA
Restrictions:	For Research Use only

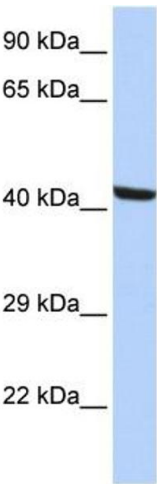
Handling

Format:	Liquid
Concentration:	Lot specific
Buffer:	Liquid. Purified antibody supplied in 1x PBS buffer with 0.09 % (w/v) sodium azide and 2 % sucrose.
Preservative:	Sodium azide
Precaution of Use:	This product contains Sodium azide: a POISONOUS AND HAZARDOUS SUBSTANCE which should be handled by trained staff only.
Handling Advice:	Avoid repeated freeze-thaw cycles.
Storage:	-20 °C
Storage Comment:	For short term use, store at 2-8°C up to 1 week. For long term storage, store at -20°C in small aliquots to prevent freeze-thaw cycles.

Publications

Product cited in: Kenigsberg, Lima, Maghen, Wyse, Lackan, Cheung, Tsang, Librach: "The elusive MAESTRO gene: Its human reproductive tissue-specific expression pattern." in: **PLoS ONE**, Vol. 12, Issue 4, pp. e0174873, (2017) ([PubMed](#)).

Validation report #103724 for Immunohistochemistry (IHC)



Western Blotting

Image 1. WB Suggested Anti-KPTN Antibody Titration:

0.2-1 ug/ml

ELISA Titer: 1:312500

Positive Control: HepG2 cell lysate