

Datasheet for ABIN2787706
anti-LCN12 antibody (N-Term)[Go to Product page](#)

1 Image

Overview

Quantity:	100 µL
Target:	LCN12
Binding Specificity:	N-Term
Reactivity:	Human, Mouse
Host:	Rabbit
Clonality:	Polyclonal
Conjugate:	This LCN12 antibody is un-conjugated
Application:	Western Blotting (WB)

Product Details

Immunogen:	The immunogen is a synthetic peptide directed towards the N terminal region of human LCN12
Sequence:	GNQFQGEWV LGLAGNSFRP EHRALLNAFT ATFELSDDGR FEVWNAMTRG
Predicted Reactivity:	Human: 100%, Mouse: 79%
Characteristics:	This is a rabbit polyclonal antibody against LCN12. It was validated on Western Blot using a cell lysate as a positive control.
Purification:	Affinity Purified

Target Details

Target:	LCN12
Alternative Name:	LCN12 (LCN12 Products)

Target Details

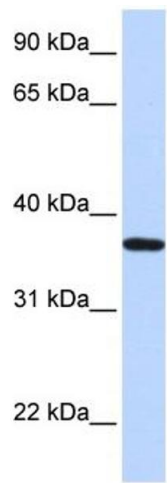
Background:	LCN12 may play a role in male fertility. LCN12 may act as a retinoid carrier protein within the epididymis. Alias Symbols: MGC34753, MGC48935 Protein Size: 355
Molecular Weight:	39 kDa
Gene ID:	286256
NCBI Accession:	NM_178536 , NP_848631
UniProt:	Q8IW14

Application Details

Application Notes:	Optimal working dilutions should be determined experimentally by the investigator.
Comment:	Antigen size: 355 AA
Restrictions:	For Research Use only

Handling

Format:	Liquid
Concentration:	Lot specific
Buffer:	Liquid. Purified antibody supplied in 1x PBS buffer with 0.09 % (w/v) sodium azide and 2 % sucrose.
Preservative:	Sodium azide
Precaution of Use:	This product contains Sodium azide: a POISONOUS AND HAZARDOUS SUBSTANCE which should be handled by trained staff only.
Handling Advice:	Avoid repeated freeze-thaw cycles.
Storage:	-20 °C
Storage Comment:	For short term use, store at 2-8°C up to 1 week. For long term storage, store at -20°C in small aliquots to prevent freeze-thaw cycles.



Western Blotting

Image 1. WB Suggested Anti-LCN12 Antibody Titration:

0.2-1 ug/ml

ELISA Titer: 1:312500

Positive Control: Human heart