



[Go to Product page](#)

Datasheet for ABIN2787708

anti-FAM188B2 antibody (Middle Region)

2 Images

Overview

Quantity:	100 µL
Target:	FAM188B2
Binding Specificity:	Middle Region
Reactivity:	Cow, Human, Rabbit, Dog, Guinea Pig
Host:	Rabbit
Clonality:	Polyclonal
Conjugate:	This FAM188B2 antibody is un-conjugated
Application:	Western Blotting (WB)

Product Details

Immunogen:	The immunogen is a synthetic peptide directed towards the middle region of human LOC646951
Sequence:	SQETLHGVLT RSDVGYLQWG KDASEDDRLS QVGSMLKTPK LPIWLCNING
Predicted Reactivity:	Cow: 79%, Dog: 93%, Guinea Pig: 77%, Human: 100%, Rabbit: 93%
Characteristics:	This is a rabbit polyclonal antibody against LOC646951. It was validated on Western Blot using a cell lysate as a positive control.
Purification:	Affinity Purified

Target Details

Target:	FAM188B2
---------	----------

Target Details

Alternative Name: FAM188B2 ([FAM188B2 Products](#))

Background: The function of this protein remains unknown.
Alias Symbols: CLRN1, C3orf76
Protein Size: 460

Molecular Weight: 51 kDa

Gene ID: 646951

NCBI Accession: [XM_929916](#), [XP_935009](#)

Application Details

Application Notes: Optimal working dilutions should be determined experimentally by the investigator.

Comment: Antigen size: 460 AA

Restrictions: For Research Use only

Handling

Format: Liquid

Concentration: Lot specific

Buffer: Liquid. Purified antibody supplied in 1x PBS buffer with 0.09 % (w/v) sodium azide and 2 % sucrose.

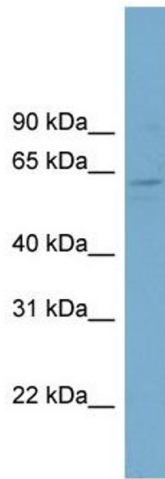
Preservative: Sodium azide

Precaution of Use: This product contains Sodium azide: a POISONOUS AND HAZARDOUS SUBSTANCE which should be handled by trained staff only.

Handling Advice: Avoid repeated freeze-thaw cycles.

Storage: -20 °C

Storage Comment: For short term use, store at 2-8°C up to 1 week. For long term storage, store at -20°C in small aliquots to prevent freeze-thaw cycles.



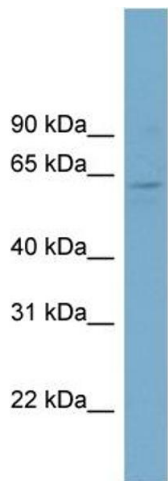
Western Blotting

Image 1. WB Suggested Anti-FAM188B2 Antibody

Titration: 0.2-1 ug/ml

ELISA Titer: 1:312500

Positive Control: OVCAR-3 cell lysate



Rabbit Anti-LOC646951 Antibody

Catalog Number: ARP58494

Lot Number: QC25811

Lane: OVCAR-3 Cell Lysate

Antibody Titration: 1.0µg/ml

Gel Concentration: 12%

Western Blotting

Image 2. WB Suggested Anti-FAM188B2

Antibody Titration: 0.2-1 µg/mL **ELISA Titer:** 1:12500

Positive Control: OVCAR-3 cell lysate