



[Go to Product page](#)

Datasheet for ABIN2787715
anti-PEF1 antibody (Middle Region)

1 Image

Overview

Quantity:	100 µL
Target:	PEF1
Binding Specificity:	Middle Region
Reactivity:	Human, Mouse, Rat, Dog, Horse, Cow, Guinea Pig, Rabbit, Zebrafish (Danio rerio)
Host:	Rabbit
Clonality:	Polyclonal
Conjugate:	This PEF1 antibody is un-conjugated
Application:	Western Blotting (WB)

Product Details

Immunogen:	The immunogen is a synthetic peptide directed towards the middle region of human PEF1
Sequence:	WKFIQQWKNL FQQYDRDRSG SISYTELQQA LSQMGYNLSP QFTQLLVSRV
Predicted Reactivity:	Cow: 93%, Dog: 100%, Guinea Pig: 93%, Horse: 100%, Human: 100%, Mouse: 100%, Rabbit: 93%, Rat: 93%, Zebrafish: 91%
Characteristics:	This is a rabbit polyclonal antibody against PEF1. It was validated on Western Blot using a cell lysate as a positive control.
Purification:	Affinity Purified

Target Details

Target:	PEF1
---------	------

Target Details

Alternative Name: [PEF1 \(PEF1 Products\)](#)

Background: PEF1 is a Ca(2+)-binding protein that belongs to the penta-EF-hand (PEF) protein family, which includes the calpain small subunit (CAPNS1, MIM 114170), sorcin (SRI, MIM 182520), grancalcin (GCA, MIM 607030), and ALG2. PEF1 is a Ca(2+)-binding protein that belongs to the penta-EF-hand (PEF) protein family, which includes the calpain small subunit (CAPNS1, MIM 114170), sorcin (SRI, MIM 182520), grancalcin (GCA, MIM 607030), and ALG2 (PDCD6, MIM 601057) (Kitaura et al., 2001 [PubMed 11278427]). [supplied by OMIM]. Sequence Note: removed 1 base from the 3' end that did not align to the reference genome assembly.
PRIMARYREFSEQ_SPAN PRIMARY_IDENTIFIER PRIMARY_SPAN COMP 1-1640 AB026628.1 1-1640
Alias Symbols: PEF1A, PEFLIN, ABP32
Protein Interaction Partner: FOXR2, KLHL12, CEP55, TFG, CALCOCO2, PDCD6, HGS, EWSR1, UBC, BAG3, DAZAP2, NR0B2, PDCD6IP, LAMTOR3, CUL3, H2AFX, ALG2,
Protein Size: 284

Molecular Weight: 31 kDa

Gene ID: 553115

NCBI Accession: [NM_012392](#), [NP_036524](#)

UniProt: [Q9UBV8](#)

Application Details

Application Notes: Optimal working dilutions should be determined experimentally by the investigator.

Comment: Antigen size: 284 AA

Restrictions: For Research Use only

Handling

Format: Liquid

Concentration: Lot specific

Buffer: Liquid. Purified antibody supplied in 1x PBS buffer with 0.09 % (w/v) sodium azide and 2 % sucrose.

Preservative: Sodium azide

Precaution of Use: This product contains Sodium azide: a POISONOUS AND HAZARDOUS SUBSTANCE which

Handling

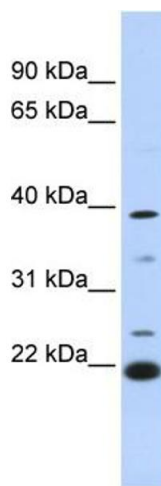
should be handled by trained staff only.

Handling Advice: Avoid repeated freeze-thaw cycles.

Storage: -20 °C

Storage Comment: For short term use, store at 2-8°C up to 1 week. For long term storage, store at -20°C in small aliquots to prevent freeze-thaw cycles.

Validation report #103724 for Immunohistochemistry (IHC)



Western Blotting

Image 1. WB Suggested Anti-PEF1 Antibody Titration: 0.2-1 ug/ml

ELISA Titer: 1:1562500

Positive Control: 721_B cell lysate