

Datasheet for ABIN2787726
anti-SLC25A6 antibody (N-Term)



[Go to Product page](#)

1 Image

Overview

Quantity:	100 µL
Target:	SLC25A6
Binding Specificity:	N-Term
Reactivity:	Human, Mouse, Rat, Cow, Dog, Pig, Sheep, Goat, Guinea Pig, Horse, Rabbit, Zebrafish (Danio rerio)
Host:	Rabbit
Clonality:	Polyclonal
Conjugate:	This SLC25A6 antibody is un-conjugated
Application:	Western Blotting (WB)

Product Details

Immunogen:	The immunogen is a synthetic peptide directed towards the N terminal region of human SLC25A6
Sequence:	LQVQHASKQI AADKQYKGIV DCIVRIPKEQ GVLSFWRGNL ANVIRYFPTQ
Predicted Reactivity:	Cow: 100%, Dog: 100%, Goat: 86%, Guinea Pig: 93%, Horse: 93%, Human: 100%, Mouse: 93%, Pig: 100%, Rabbit: 93%, Rat: 100%, Sheep: 100%, Zebrafish: 93%
Characteristics:	This is a rabbit polyclonal antibody against SLC25A6. It was validated on Western Blot using a cell lysate as a positive control.
Purification:	Affinity Purified

Target Details

Target:	SLC25A6
Alternative Name:	SLC25A6 (SLC25A6 Products)
Background:	<p>SLC25A6 catalyzes the exchange of ADP and ATP across the mitochondrial inner membrane.</p> <p>SLC25A6 may participate in the formation of the permeability transition pore complex (PTPC) responsible for the release of mitochondrial products that triggers apoptosis.</p> <p>Alias Symbols: ANT3, ANT3Y, MGC17525, AAC3</p> <p>Protein Interaction Partner: NOTCH2NL, TEK4, LZTS2, MTUS2, MID2, HUWE1, TRIP6, TRAF1, KRT31, TRIM23, AP2B1, FAM96B, SUMO2, UBC, MDM2, ASB18, ASB14, ASB8, SMURF2, ZBTB1, HECW2, FBXO6, ADRB2, CLN5, CLN3, US3, HCVgp1, UBL4A, YWHAE, GRB2, TIMM9, TIMM10, TIMM13, NNT, UQCRC1, VAMP2, RPL10</p> <p>Protein Size: 298</p>
Molecular Weight:	33 kDa
Gene ID:	293
NCBI Accession:	NM_001636 , NP_001627
UniProt:	Q6QRN9

Application Details

Application Notes:	Optimal working dilutions should be determined experimentally by the investigator.
Comment:	Antigen size: 298 AA
Restrictions:	For Research Use only

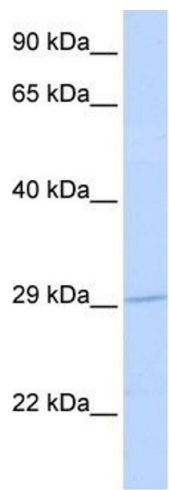
Handling

Format:	Liquid
Concentration:	Lot specific
Buffer:	Liquid. Purified antibody supplied in 1x PBS buffer with 0.09 % (w/v) sodium azide and 2 % sucrose.
Preservative:	Sodium azide
Precaution of Use:	This product contains Sodium azide: a POISONOUS AND HAZARDOUS SUBSTANCE which should be handled by trained staff only.
Handling Advice:	Avoid repeated freeze-thaw cycles.

Handling

Storage:	-20 °C
Storage Comment:	For short term use, store at 2-8°C up to 1 week. For long term storage, store at -20°C in small aliquots to prevent freeze-thaw cycles.

Images



Western Blotting

Image 1. WB Suggested Anti-SLC25A6 Antibody Titration:

0.2-1 ug/ml

ELISA Titer: 1:1562500

Positive Control: Human heart