

Datasheet for ABIN2787730
anti-TBC1D13 antibody (Middle Region)[Go to Product page](#)

2 Images

Overview

Quantity:	100 µL
Target:	TBC1D13
Binding Specificity:	Middle Region
Reactivity:	Human, Mouse, Dog, Guinea Pig, Horse, Rabbit, Rat, Cow
Host:	Rabbit
Clonality:	Polyclonal
Conjugate:	This TBC1D13 antibody is un-conjugated
Application:	Western Blotting (WB)

Product Details

Immunogen:	The immunogen is a synthetic peptide directed towards the middle region of human TBC1D13
Sequence:	FLLLVCCAML MLIREQLLEG DFTVNMRLQ DYPITDVCQI LQKAKELQDS
Predicted Reactivity:	Cow: 92%, Dog: 100%, Guinea Pig: 100%, Horse: 100%, Human: 100%, Mouse: 100%, Rabbit: 100%, Rat: 100%
Characteristics:	This is a rabbit polyclonal antibody against TBC1D13. It was validated on Western Blot using a cell lysate as a positive control.
Purification:	Affinity Purified

Target Details

Target:	TBC1D13
---------	---------

Target Details

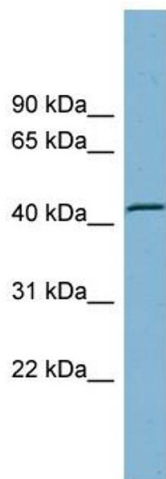
Alternative Name:	TBC1D13 (TBC1D13 Products)
Background:	The function of this protein remains unknown. Alias Symbols: FLJ10743, RP11-545E17.5 Protein Interaction Partner: UBC, WDR12, SEC23IP, Protein Size: 400
Molecular Weight:	44 kDa
Gene ID:	54662
NCBI Accession:	NM_018201 , NP_060671
UniProt:	Q5T270

Application Details

Application Notes:	Optimal working dilutions should be determined experimentally by the investigator.
Comment:	Antigen size: 400 AA
Restrictions:	For Research Use only

Handling

Format:	Liquid
Concentration:	Lot specific
Buffer:	Liquid. Purified antibody supplied in 1x PBS buffer with 0.09 % (w/v) sodium azide and 2 % sucrose.
Preservative:	Sodium azide
Precaution of Use:	This product contains Sodium azide: a POISONOUS AND HAZARDOUS SUBSTANCE which should be handled by trained staff only.
Handling Advice:	Avoid repeated freeze-thaw cycles.
Storage:	-20 °C
Storage Comment:	For short term use, store at 2-8°C up to 1 week. For long term storage, store at -20°C in small aliquots to prevent freeze-thaw cycles.

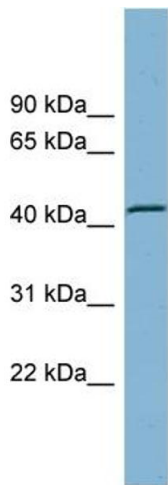


Western Blotting

Image 1. WB Suggested Anti-TBC1D13 Antibody Titration:
0.2-1 ug/ml

ELISA Titer: 1:62500

Positive Control: Human kidney



Rabbit Anti-TBC1D13 Antibody
Catalog Number: ARP58536
Lot Number: QC25876
Lane: Fetal Kidney Lysate

Antibody Titration: 1.0µg/ml
Gel Concentration: 12%

Western Blotting

Image 2. WB Suggested Anti-TBC1D13
Antibody Titration: 0.2-1 µg/mL ELISA Titer: 1::2500
Positive Control: Human kidney