



[Go to Product page](#)

Datasheet for ABIN2787753
anti-AZGP1 antibody (N-Term)

2 Images

Overview

Quantity:	100 µL
Target:	AZGP1
Binding Specificity:	N-Term
Reactivity:	Human, Dog
Host:	Rabbit
Clonality:	Polyclonal
Conjugate:	This AZGP1 antibody is un-conjugated
Application:	Western Blotting (WB)

Product Details

Immunogen:	The immunogen is a synthetic peptide directed towards the N terminal region of human AZGP1
Sequence:	MVRMVPVLLS LLLLLGPAVP QENQDGRYSL TYIYTGLSKH VEDVPAFQAL
Predicted Reactivity:	Dog: 79%, Human: 100%
Characteristics:	This is a rabbit polyclonal antibody against AZGP1. It was validated on Western Blot using a cell lysate as a positive control.
Purification:	Affinity Purified

Target Details

Target:	AZGP1
Alternative Name:	AZGP1 (AZGP1 Products)

Target Details

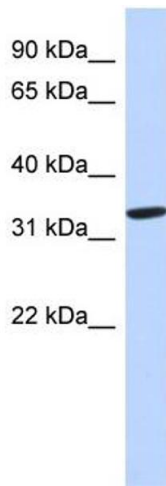
Background:	Stimulates lipid degradation in adipocytes and causes the extensive fat losses associated with some advanced cancers. AZGP1 may bind polyunsaturated fatty acids. Alias Symbols: ZA2G, ZAG Protein Interaction Partner: GTPBP4, CDK19, NUF2, ABCC1, SHBG, CDK2, UBC, Ikbip, USP53, AZGP1, ITGAV, Protein Size: 298
Molecular Weight:	33 kDa
Gene ID:	563
NCBI Accession:	NM_001185 , NP_001176
UniProt:	P25311
Pathways:	Regulation of Leukocyte Mediated Immunity , Positive Regulation of Immune Effector Process

Application Details

Application Notes:	Optimal working dilutions should be determined experimentally by the investigator.
Comment:	Antigen size: 298 AA
Restrictions:	For Research Use only

Handling

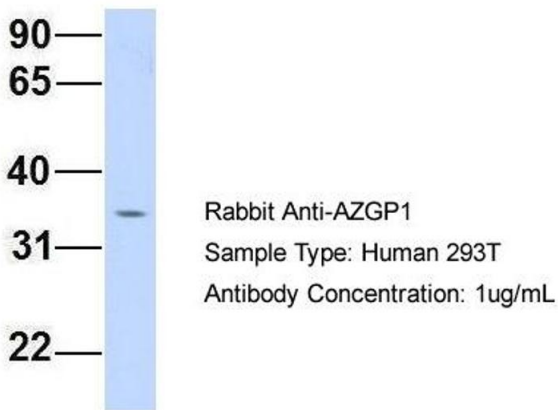
Format:	Liquid
Concentration:	Lot specific
Buffer:	Liquid. Purified antibody supplied in 1x PBS buffer with 0.09 % (w/v) sodium azide and 2 % sucrose.
Preservative:	Sodium azide
Precaution of Use:	This product contains Sodium azide: a POISONOUS AND HAZARDOUS SUBSTANCE which should be handled by trained staff only.
Handling Advice:	Avoid repeated freeze-thaw cycles.
Storage:	-20 °C
Storage Comment:	For short term use, store at 2-8°C up to 1 week. For long term storage, store at -20°C in small aliquots to prevent freeze-thaw cycles.



Western Blotting

Image 1. WB Suggested Anti-AZGP1 Antibody Titration: 0.2-1 ug/ml ELISA Titer: 1:1562500 Positive Control: Human heart

AZGP1



Western Blotting

Image 2. Host: Rabbit Target Name: AZGP1 Sample Type: 293T Antibody Dilution: 1.0ug/ml