

Datasheet for ABIN2787758
anti-BUB3 antibody (N-Term)[Go to Product page](#)

4 Images

Overview

Quantity:	100 µL
Target:	BUB3
Binding Specificity:	N-Term
Reactivity:	Human, Mouse, Rat, Cow, Guinea Pig, Horse, Rabbit
Host:	Rabbit
Clonality:	Polyclonal
Conjugate:	This BUB3 antibody is un-conjugated
Application:	Western Blotting (WB), Immunofluorescence (IF), Immunohistochemistry (IHC)

Product Details

Immunogen:	The immunogen is a synthetic peptide directed towards the N terminal region of human BUB3
Sequence:	MTGSNEFKLN QPPEDGISSV KFSPNTSQFL LVSSWDTSVR LYDVPANSMR
Predicted Reactivity:	Cow: 100%, Guinea Pig: 100%, Horse: 100%, Human: 100%, Mouse: 100%, Rabbit: 100%, Rat: 100%
Characteristics:	This is a rabbit polyclonal antibody against BUB3. It was validated on Western Blot using a cell lysate as a positive control.
Purification:	Affinity Purified

Target Details

Target:	BUB3
---------	------

Target Details

Alternative Name:	BUB3 (BUB3 Products)
Background:	<p>BUB3 is required for kinetochore localization of BUB1. This gene encodes a protein involved in spindle checkpoint function. The encoded protein contains four WD repeat domains and has sequence similarity with the yeast BUB3 protein. Alternate transcriptional splice variants, encoding different isoforms, have been characterized.</p> <p>Alias Symbols: BUB3L, hBUB3</p> <p>Protein Interaction Partner: BUB1B, BUB1, HUWE1, PSTPIP1, UBC, SUMO2, CDC20, NEDD8, SUMO1, RPA3, RPA2, RPA1, WBP4, CLIP1, EGFR, ZNF207, VCAM1, UBA1, THRA, RPL37A, ITGA4, FN1, NKAP, EXOC3, SUGT1, CPNE1, ANAPC4, SEPT2, TOP1, SMAD3, SMAD2, Mad2l1, COPS5, CUL3, SF3A2, ELAVL1, CDC27, HDGF</p> <p>Protein Size: 326</p>
Molecular Weight:	36 kDa
Gene ID:	9184
NCBI Accession:	NM_001007793 , NP_001007794
UniProt:	A6NJ42
Pathways:	Maintenance of Protein Location

Application Details

Application Notes:	Optimal working dilutions should be determined experimentally by the investigator.
Comment:	Antigen size: 326 AA
Restrictions:	For Research Use only

Handling

Format:	Liquid
Concentration:	Lot specific
Buffer:	Liquid. Purified antibody supplied in 1x PBS buffer with 0.09 % (w/v) sodium azide and 2 % sucrose.
Preservative:	Sodium azide
Precaution of Use:	This product contains Sodium azide: a POISONOUS AND HAZARDOUS SUBSTANCE which should be handled by trained staff only.

Handling

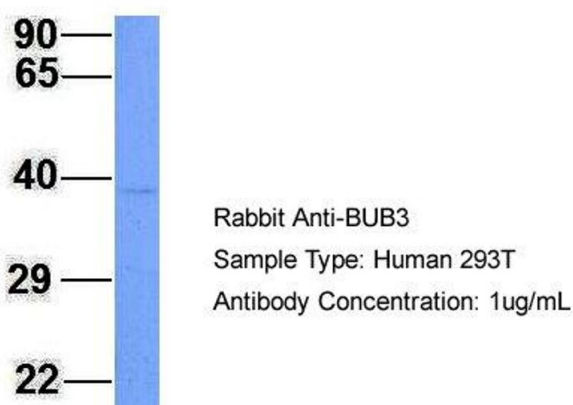
Handling Advice: Avoid repeated freeze-thaw cycles.

Storage: -20 °C

Storage Comment: For short term use, store at 2-8°C up to 1 week. For long term storage, store at -20°C in small aliquots to prevent freeze-thaw cycles.

Images

BUB3

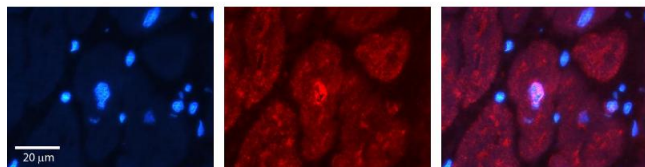


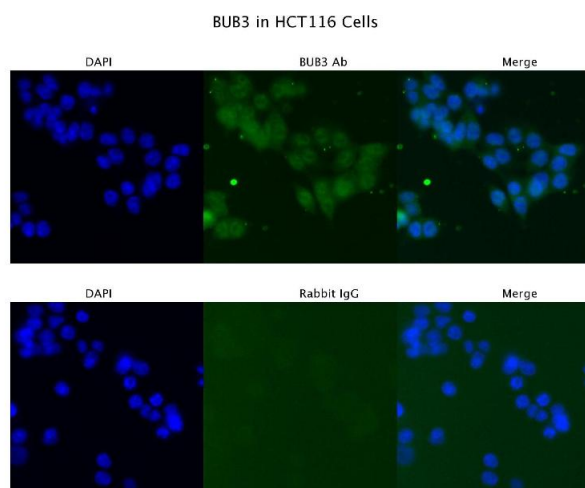
Western Blotting

Image 1. Host: Rabbit Target Name: BUB3 Sample Type: 293T Antibody Dilution: 1.0ug/ml BUB3 is strongly supported by BioGPS gene expression data to be expressed in Human HEK293T cells

Immunohistochemistry

Image 2. Rabbit Anti-BUB3 Antibody Catalog Number: ARP58599_P050 Formalin Fixed Paraffin Embedded Tissue: Human heart Tissue Observed Staining: Nucleus Primary Antibody Concentration: 1:100 Other Working Concentrations: N/A Secondary Antibody: Donkey anti-Rabbit-Cy3 Secondary Antibody Concentration: 1:200 Magnification: 20X Exposure Time: 0.5 - 2.0 sec





Immunofluorescence

Image 3. Sample Type : HCT116 Primary Antibody Dilution: 4 ug/ml Secondary Antibody : Anti-rabbit Alexa 546 Secondary Antibody Dilution: 2 ug/ml Gene Name : BUB3

Please check the [product details page](#) for more images. Overall 4 images are available for ABIN2787758.