

Datasheet for ABIN2787759

## anti-Calreticulin 3 antibody (N-Term)



[Go to Product page](#)

### 1 Image

#### Overview

Quantity:	100 µL
Target:	Calreticulin 3 (CALR3)
Binding Specificity:	N-Term
Reactivity:	Human, Mouse, Rat, Dog, Guinea Pig, Horse, Pig, Rabbit, Cow
Host:	Rabbit
Clonality:	Polyclonal
Conjugate:	This Calreticulin 3 antibody is un-conjugated
Application:	Western Blotting (WB)

#### Product Details

Immunogen:	The immunogen is a synthetic peptide directed towards the N terminal region of human CALR3
Sequence:	MAGPQQPPY LHLAELTASQ FLEIWKHFDA DGNGYIEGKE LENFFQELEK
Predicted Reactivity:	Cow: 93%, Dog: 100%, Guinea Pig: 86%, Horse: 100%, Human: 100%, Mouse: 92%, Pig: 93%, Rabbit: 93%, Rat: 92%
Characteristics:	This is a rabbit polyclonal antibody against CALR3. It was validated on Western Blot using a cell lysate as a positive control.
Purification:	Affinity Purified

#### Target Details

Target:	Calreticulin 3 (CALR3)
---------	------------------------

### Target Details

Alternative Name:	CALR3 ( <a href="#">CALR3 Products</a> )
Background:	<p>Calreticulins, such as CALR3, are Ca(2+)-binding chaperones localized mainly in the endoplasmic/sarcoplasmic reticulum. Calreticulins, such as CALR3, are Ca(2+)-binding chaperones localized mainly in the endoplasmic/sarcoplasmic reticulum Persson et al. (2002) [PubMed 12384296]. [supplied by OMIM]. PRIMARYREFSEQ_SPAN PRIMARY_IDENTIFIER PRIMARY_SPAN COMP 1-4 BC014595.2 1-4 5-443 DB459545.1 7-445 444-528 BP370084.1 424-508 529-1034 BC014595.2 529-1034 1035-1035 AC008764.9 27895-27895 c 1036-1273 BC014595.2 1036-1273 1274-1285 DB510196.1 313-324</p> <p>Alias Symbols: CRT2, FLJ25355, MGC26577, CT93, CMH19</p> <p>Protein Interaction Partner: SRRM2,</p> <p>Protein Size: 384</p>
Molecular Weight:	42 kDa
Gene ID:	125972
NCBI Accession:	<a href="#">NM_145046</a> , <a href="#">NP_659483</a>
UniProt:	<a href="#">Q96L12</a>
Pathways:	<a href="#">Activation of Innate immune Response</a>

### Application Details

Application Notes:	Optimal working dilutions should be determined experimentally by the investigator.
Comment:	Antigen size: 384 AA
Restrictions:	For Research Use only

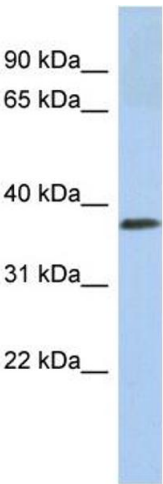
### Handling

Format:	Liquid
Concentration:	Lot specific
Buffer:	Liquid. Purified antibody supplied in 1x PBS buffer with 0.09 % (w/v) sodium azide and 2 % sucrose.
Preservative:	Sodium azide
Precaution of Use:	This product contains Sodium azide: a POISONOUS AND HAZARDOUS SUBSTANCE which should be handled by trained staff only.

Handling

Handling Advice:	Avoid repeated freeze-thaw cycles.
Storage:	-20 °C
Storage Comment:	For short term use, store at 2-8°C up to 1 week. For long term storage, store at -20°C in small aliquots to prevent freeze-thaw cycles.

Images



**Western Blotting**

**Image 1.** WB Suggested Anti-CALR3 Antibody Titration: 0.2-1 ug/ml ELISA Titer: 1:62500 Positive Control: Jurkat cell lysate