



[Go to Product page](#)

Datasheet for ABIN2787769  
**anti-Esterase D antibody (N-Term)**

2 Images

Overview

Quantity:	100 µL
Target:	Esterase D (ESD)
Binding Specificity:	N-Term
Reactivity:	Human, Mouse, Rat, Pig, Cow, Dog, Horse, Guinea Pig, Rabbit, Zebrafish (Danio rerio)
Host:	Rabbit
Clonality:	Polyclonal
Conjugate:	This Esterase D antibody is un-conjugated
Application:	Western Blotting (WB), Immunohistochemistry (IHC)

Product Details

Immunogen:	The immunogen is a synthetic peptide directed towards the N terminal region of human ESD
Sequence:	MALKQISSNK CFGGLQKQVFE HDSVELNCKM KFAVYLPPKA ETGKCPALYW
Predicted Reactivity:	Cow: 100%, Dog: 100%, Guinea Pig: 92%, Horse: 100%, Human: 100%, Mouse: 92%, Pig: 100%, Rabbit: 92%, Rat: 92%, Zebrafish: 91%
Characteristics:	This is a rabbit polyclonal antibody against ESD. It was validated on Western Blot using a cell lysate as a positive control.
Purification:	Affinity Purified

Target Details

Target:	Esterase D (ESD)
---------	------------------

## Target Details

---

Alternative Name:	ESD ( <a href="#">ESD Products</a> )
Background:	ESD is a serine hydrolase involved in the detoxification of formaldehyde. Alias Symbols: FGH Protein Interaction Partner: FSD2, UBC, ESD, SUMO2, HDAC1, FN1, MDH1, GRB2, DDA1, Protein Size: 282
Molecular Weight:	31 kDa
Gene ID:	2098
NCBI Accession:	<a href="#">NM_001984</a> , <a href="#">NP_001975</a>
UniProt:	<a href="#">P10768</a>

## Application Details

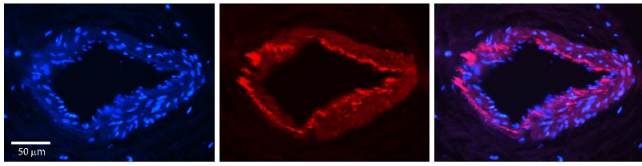
---

Application Notes:	Optimal working dilutions should be determined experimentally by the investigator.
Comment:	Antigen size: 282 AA
Restrictions:	For Research Use only

## Handling

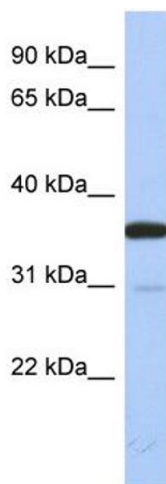
---

Format:	Liquid
Concentration:	Lot specific
Buffer:	Liquid. Purified antibody supplied in 1x PBS buffer with 0.09 % (w/v) sodium azide and 2 % sucrose.
Preservative:	Sodium azide
Precaution of Use:	This product contains Sodium azide: a POISONOUS AND HAZARDOUS SUBSTANCE which should be handled by trained staff only.
Handling Advice:	Avoid repeated freeze-thaw cycles.
Storage:	-20 °C
Storage Comment:	For short term use, store at 2-8°C up to 1 week. For long term storage, store at -20°C in small aliquots to prevent freeze-thaw cycles.



### Immunohistochemistry

**Image 1.** Rabbit Anti-ESD Antibody Catalog Number: ARP58619\_P050 Formalin Fixed Paraffin Embedded Tissue: Human Heart Tissue Observed Staining: Cytoplasm in endothelial and smooth muscle cells in arterioles Primary Antibody Concentration: 1:100 Other Working Concentrations: 1:600 Secondary Antibody: Donkey anti-Rabbit-Cy3 Secondary Antibody Concentration: 1:200 Magnification: 20X Exposure Time: 0.5 - 2.0 sec



### Western Blotting

**Image 2.** WB Suggested Anti-ESD Antibody Titration: 0.2-1 ug/ml ELISA Titer: 1:1562500 Positive Control: Human kidney