



[Go to Product page](#)

Datasheet for ABIN2787775
anti-ISPD antibody (N-Term)

1 Image

Overview

Quantity:	100 µL
Target:	ISPD
Binding Specificity:	N-Term
Reactivity:	Human
Host:	Rabbit
Clonality:	Polyclonal
Conjugate:	This ISPD antibody is un-conjugated
Application:	Western Blotting (WB)

Product Details

Immunogen:	The immunogen is a synthetic peptide directed towards the N terminal region of human hCG_1745121
Sequence:	MTPQSLLQTT LFLLSLLFLV QGAHGRGRHRE DFRFCSQRNQ THRSSLHYKP
Predicted Reactivity:	Human: 100%
Characteristics:	This is a rabbit polyclonal antibody against hCG_1745121. It was validated on Western Blot using a cell lysate as a positive control.
Purification:	Affinity Purified

Target Details

Target:	ISPD
---------	------

Target Details

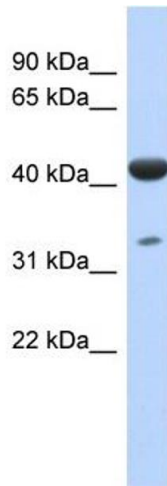
Alternative Name:	hCG_1745121 (ISPD Products)
Background:	The specific function of hCG_1745121 is not yet known. Alias Symbols: LOC729920, Nip, hCG_1745121 Protein Size: 401
Molecular Weight:	44 kDa
Gene ID:	729920
NCBI Accession:	NM_001101417 , NP_001094887
UniProt:	A4D126

Application Details

Application Notes:	Optimal working dilutions should be determined experimentally by the investigator.
Comment:	Antigen size: 401 AA
Restrictions:	For Research Use only

Handling

Format:	Liquid
Concentration:	Lot specific
Buffer:	Liquid. Purified antibody supplied in 1x PBS buffer with 0.09 % (w/v) sodium azide and 2 % sucrose.
Preservative:	Sodium azide
Precaution of Use:	This product contains Sodium azide: a POISONOUS AND HAZARDOUS SUBSTANCE which should be handled by trained staff only.
Handling Advice:	Avoid repeated freeze-thaw cycles.
Storage:	-20 °C
Storage Comment:	For short term use, store at 2-8°C up to 1 week. For long term storage, store at -20°C in small aliquots to prevent freeze-thaw cycles.



Western Blotting

Image 1. WB Suggested Anti-hCG_1745121 Antibody

Titration: 0.2-1 ug/ml ELISA Titer: 1:62500 Positive Control:

Human Lung