

Datasheet for ABIN2787776  
**anti-LYPD4 antibody (N-Term)**[Go to Product page](#)

## 1 Image

## Overview

Quantity:	100 µL
Target:	LYPD4
Binding Specificity:	N-Term
Reactivity:	Human, Mouse, Rat
Host:	Rabbit
Clonality:	Polyclonal
Conjugate:	This LYPD4 antibody is un-conjugated
Application:	Western Blotting (WB)

## Product Details

Immunogen:	The immunogen is a synthetic peptide directed towards the N terminal region of human LYPD4
Sequence:	MGPQHLRLVQ LFCLLGAIST LPRAGALLCY EATASRFRAV AFHNWKWLLM
Predicted Reactivity:	Human: 100%, Mouse: 79%, Rat: 79%
Characteristics:	This is a rabbit polyclonal antibody against LYPD4. It was validated on Western Blot using a cell lysate as a positive control.
Purification:	Affinity Purified

## Target Details

Target:	LYPD4
Alternative Name:	LYPD4 ( <a href="#">LYPD4 Products</a> )

## Target Details

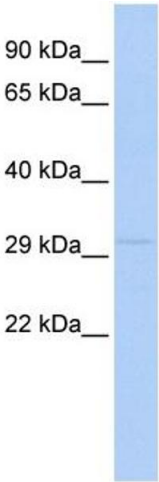
Background:	The specific function of LYPD4 is not yet known. Alias Symbols: MGC42718, SMR Protein Size: 246
Molecular Weight:	27 kDa
Gene ID:	147719
NCBI Accession:	<a href="#">NM_173506</a> , <a href="#">NP_775777</a>
UniProt:	<a href="#">Q6UWN0</a>

## Application Details

Application Notes:	Optimal working dilutions should be determined experimentally by the investigator.
Comment:	Antigen size: 246 AA
Restrictions:	For Research Use only

## Handling

Format:	Liquid
Concentration:	Lot specific
Buffer:	Liquid. Purified antibody supplied in 1x PBS buffer with 0.09 % (w/v) sodium azide and 2 % sucrose.
Preservative:	Sodium azide
Precaution of Use:	This product contains Sodium azide: a POISONOUS AND HAZARDOUS SUBSTANCE which should be handled by trained staff only.
Handling Advice:	Avoid repeated freeze-thaw cycles.
Storage:	-20 °C
Storage Comment:	For short term use, store at 2-8°C up to 1 week. For long term storage, store at -20°C in small aliquots to prevent freeze-thaw cycles.



Western Blotting

**Image 1.** WB Suggested Anti-LYPD4 Antibody Titration:  
0.2-1 ug/ml ELISA Titer: 1:312500 Positive Control: 721\_B  
cell lysate