



[Go to Product page](#)

Datasheet for ABIN2787780

anti-alpha KGDHC antibody (N-Term)

2 Images

Overview

Quantity:	100 µL
Target:	alpha KGDHC (alphaKGDHC)
Binding Specificity:	N-Term
Reactivity:	Human, Rat, Mouse, Cow, Horse, Rabbit, Guinea Pig
Host:	Rabbit
Clonality:	Polyclonal
Conjugate:	This alpha KGDHC antibody is un-conjugated
Application:	Western Blotting (WB)

Product Details

Immunogen:	The immunogen is a synthetic peptide directed towards the N terminal region of human OGDH
Sequence:	MFHLRTCAAK LRPLTASQTV KTF SQNRPAARTFQQIRCY SAPVAAEPFL
Predicted Reactivity:	Cow: 100%, Guinea Pig: 93%, Horse: 100%, Human: 100%, Mouse: 93%, Rabbit: 93%, Rat: 93%
Characteristics:	This is a rabbit polyclonal antibody against OGDH. It was validated on Western Blot using a cell lysate as a positive control.
Purification:	Affinity Purified

Target Details

Target:	alpha KGDHC (alphaKGDHC)
Alternative Name:	OGDH (alphaKGDHC Products)

Target Details

Background:	<p>The 2-oxoglutarate dehydrogenase complex catalyzes the overall conversion of 2-oxoglutarate to succinyl-CoA and CO₂. It contains multiple copies of three enzymatic components: 2-oxoglutarate dehydrogenase (E1), dihydrolipoamide succinyltransferase (E2) and lipoamide dehydrogenase (E3). This gene encodes one subunit of the 2-oxoglutarate dehydrogenase complex. This complex catalyzes the overall conversion of 2-oxoglutarate (alpha-ketoglutarate) to succinyl-CoA and CO₂ during the Krebs cycle. The protein is located in the mitochondrial matrix and uses thiamine pyrophosphate as a cofactor. A congenital deficiency in 2-oxoglutarate dehydrogenase activity is believed to lead to hypotonia, metabolic acidosis, and hyperlactatemia.</p> <p>Alias Symbols: AKGDH, E1k, OGDC</p> <p>Protein Interaction Partner: MDM2, UBC, SUMO1, NEDD8, CPSF7, MRPL38, MRPL41, TSR1, MRPS2, MRPL15, MRPL13, SCFD1, PDHX, SSBP1, SUMO2, PDHB, PDHA1, DLST, DLAT, DHODH, ISG15, USP13, PLSCR1, DLD,</p> <p>Protein Size: 427</p>
-------------	---

Molecular Weight:	47 kDa
-------------------	--------

Gene ID:	4967
----------	------

NCBI Accession:	NM_001003941 , NP_001003941
-----------------	---

UniProt:	Q96DD3
----------	------------------------

Application Details

Application Notes:	Optimal working dilutions should be determined experimentally by the investigator.
--------------------	--

Comment:	Antigen size: 427 AA
----------	----------------------

Restrictions:	For Research Use only
---------------	-----------------------

Handling

Format:	Liquid
---------	--------

Concentration:	Lot specific
----------------	--------------

Buffer:	Liquid. Purified antibody supplied in 1x PBS buffer with 0.09 % (w/v) sodium azide and 2 % sucrose.
---------	---

Preservative:	Sodium azide
---------------	--------------

Precaution of Use:	This product contains Sodium azide: a POISONOUS AND HAZARDOUS SUBSTANCE which
--------------------	---

Handling

should be handled by trained staff only.

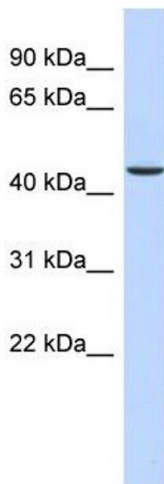
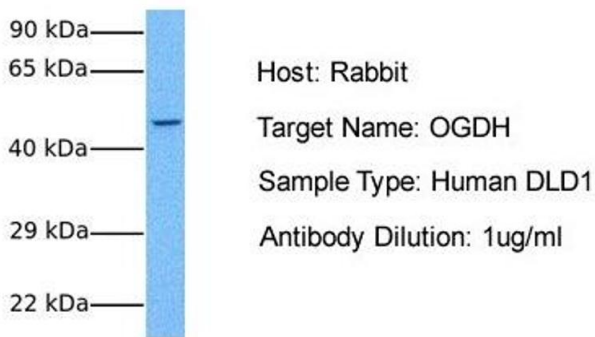
Handling Advice: Avoid repeated freeze-thaw cycles.

Storage: -20 °C

Storage Comment: For short term use, store at 2-8°C up to 1 week. For long term storage, store at -20°C in small aliquots to prevent freeze-thaw cycles.

Validation report #103724 for Immunohistochemistry (IHC)

OGDH



Western Blotting

Image 1. Host: Rabbit Target Name: OGDH Sample Tissue: Human DLD1 Antibody Dilution: 1.0ug/ml

Western Blotting

Image 2. WB Suggested Anti-OGDH Antibody Titration: 0.2-1 ug/ml ELISA Titer: 1:12500 Positive Control: Human Liver