

Datasheet for ABIN2787784
anti-SPATA16 antibody (N-Term)[Go to Product page](#)

1 Image

Overview

Quantity:	100 µL
Target:	SPATA16
Binding Specificity:	N-Term
Reactivity:	Human, Horse
Host:	Rabbit
Clonality:	Polyclonal
Conjugate:	This SPATA16 antibody is un-conjugated
Application:	Western Blotting (WB)

Product Details

Immunogen:	The immunogen is a synthetic peptide directed towards the N terminal region of human SPATA16
Sequence:	MDAGSSRSLE NAVNRIYHDQ LVPKINTSKK MSTLAHPPNI LEMSQEIKKN
Predicted Reactivity:	Horse: 77%, Human: 100%
Characteristics:	This is a rabbit polyclonal antibody against SPATA16. It was validated on Western Blot using a cell lysate as a positive control.
Purification:	Affinity Purified

Target Details

Target:	SPATA16
---------	---------

Target Details

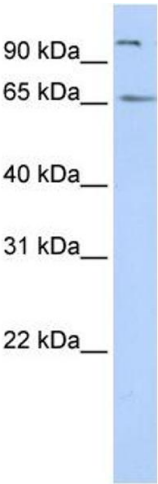
Alternative Name:	SPATA16 (SPATA16 Products)
Background:	<p>SPATA16 is involved in the formation of sperm acrosome, which implicated its potential role in spermatogenesis and sperm-egg fusion. Defects in SPATA16 are a cause of globozoospermia, also called Round-headed spermatozoa.</p> <p>Alias Symbols: NYD-SP12, SPGF6</p> <p>Protein Interaction Partner: Dlg4,</p> <p>Protein Size: 569</p>
Molecular Weight:	63 kDa
Gene ID:	83893
NCBI Accession:	NM_031955 , NP_114161
UniProt:	Q9BXB7

Application Details

Application Notes:	Optimal working dilutions should be determined experimentally by the investigator.
Comment:	Antigen size: 569 AA
Restrictions:	For Research Use only

Handling

Format:	Liquid
Concentration:	Lot specific
Buffer:	Liquid. Purified antibody supplied in 1x PBS buffer with 0.09 % (w/v) sodium azide and 2 % sucrose.
Preservative:	Sodium azide
Precaution of Use:	This product contains Sodium azide: a POISONOUS AND HAZARDOUS SUBSTANCE which should be handled by trained staff only.
Handling Advice:	Avoid repeated freeze-thaw cycles.
Storage:	-20 °C
Storage Comment:	For short term use, store at 2-8°C up to 1 week. For long term storage, store at -20°C in small aliquots to prevent freeze-thaw cycles.



Western Blotting

Image 1. WB Suggested Anti-SPATA16 Antibody Titration:
0.2-1 ug/ml ELISA Titer: 1:62500 Positive Control: HepG2
cell lysate