



[Go to Product page](#)

Datasheet for ABIN2787785  
**anti-SPATA22 antibody (N-Term)**

1 Image

1 Publication

### Overview

Quantity:	100 µL
Target:	SPATA22
Binding Specificity:	N-Term
Reactivity:	Human, Mouse, Rat, Cow, Guinea Pig, Horse, Rabbit, Dog
Host:	Rabbit
Clonality:	Polyclonal
Conjugate:	This SPATA22 antibody is un-conjugated
Application:	Western Blotting (WB)

### Product Details

Immunogen:	The immunogen is a synthetic peptide directed towards the N terminal region of human SPATA22
Sequence:	MKRSLSENSA RSTAGCLPVP LFNQKKRNRQ PLTSNPLKDD SGISTPSDNY
Predicted Reactivity:	Cow: 100%, Dog: 100%, Guinea Pig: 100%, Horse: 100%, Human: 100%, Mouse: 100%, Rabbit: 100%, Rat: 100%
Characteristics:	This is a rabbit polyclonal antibody against SPATA22. It was validated on Western Blot using a cell lysate as a positive control.
Purification:	Affinity Purified

### Target Details

Target:	SPATA22
---------	---------

## Target Details

---

Alternative Name:	SPATA22 ( <a href="#">SPATA22 Products</a> )
Background:	SPATA22 is highly expressed in adult testis. The specific function of SPATA22 is not yet known. Alias Symbols: NYD-SP20, NYDSP20 Protein Interaction Partner: GOLGA2, PRMT6, KDM1A, ECT2, Protein Size: 363
Molecular Weight:	40 kDa
Gene ID:	84690
NCBI Accession:	<a href="#">NM_032598</a> , <a href="#">NP_115987</a>
UniProt:	<a href="#">Q8NHS9</a>

## Application Details

---

Application Notes:	Optimal working dilutions should be determined experimentally by the investigator.
Comment:	Antigen size: 363 AA
Restrictions:	For Research Use only

## Handling

---

Format:	Liquid
Concentration:	Lot specific
Buffer:	Liquid. Purified antibody supplied in 1x PBS buffer with 0.09 % (w/v) sodium azide and 2 % sucrose.
Preservative:	Sodium azide
Precaution of Use:	This product contains Sodium azide: a POISONOUS AND HAZARDOUS SUBSTANCE which should be handled by trained staff only.
Handling Advice:	Avoid repeated freeze-thaw cycles.
Storage:	-20 °C
Storage Comment:	For short term use, store at 2-8°C up to 1 week. For long term storage, store at -20°C in small aliquots to prevent freeze-thaw cycles.

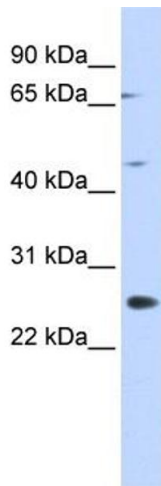
## Publications

---

Product cited in: Wang, Huang, Liu: "[Nitrite content of common vegetables in Wuhu City]." in: **Ying yong sheng**

**tai xue bao = The journal of applied ecology / Zhongguo sheng tai xue xue hui, Zhongguo ke xue yuan Shenyang ying yong sheng tai yan jiu suo zhu ban**, Vol. 16, Issue 1, pp. 189-92, (2005) ([PubMed](#)).

Images



**Western Blotting**

**Image 1.** WB Suggested Anti-SPATA22 Antibody Titration: 0.2-1 ug/ml ELISA Titer: 1:1562500 Positive Control: 293T cell lysate