

Datasheet for ABIN2787799
anti-IMPA1 antibody (Middle Region)[Go to Product page](#)

1 Image

Overview

Quantity:	100 µL
Target:	IMPA1
Binding Specificity:	Middle Region
Reactivity:	Human, Mouse, Rat, Guinea Pig, Rabbit, Cow, Dog, Horse, Pig
Host:	Rabbit
Clonality:	Polyclonal
Conjugate:	This IMPA1 antibody is un-conjugated
Application:	Western Blotting (WB)

Product Details

Immunogen:	The immunogen is a synthetic peptide directed towards the middle region of human IMPA1
Sequence:	IVTEAGGVLM DVTGGPFDLM SRRVIAANNR ILAERIAKEI QVIPLQRDDE
Predicted Reactivity:	Cow: 93%, Dog: 93%, Guinea Pig: 86%, Horse: 79%, Human: 100%, Mouse: 85%, Pig: 93%, Rabbit: 79%, Rat: 92%
Characteristics:	This is a rabbit polyclonal antibody against IMPA1. It was validated on Western Blot using a cell lysate as a positive control.
Purification:	Affinity Purified

Target Details

Target:	IMPA1
---------	-------

Target Details

Alternative Name:	IMPA1 (IMPA1 Products)
Background:	<p>IMPA1 is responsible for the provision of inositol required for synthesis of phosphatidylinositol and polyphosphoinositides and has been implicated as the pharmacological target for lithium action in brain. IMPA1 can use myo-inositol monophosphates, myo-inositol-1,3-diphosphate, myo-inositol-1,4-diphosphate, scyllo-inositol-phosphate, glucose-1-phosphate, glucose-6-phosphate, fructose-1-phosphate, beta-glycerophosphate, and 2'-AMP as substrates.</p> <p>Alias Symbols: IMPA, IMP</p> <p>Protein Interaction Partner: IMPA2, IMPA1, SUMO2, UBC, S100B, nxf1, sbr, nxf-1, mex67, ELAVL1, CALB1,</p> <p>Protein Size: 277</p>
Molecular Weight:	30 kDa
Gene ID:	3612
NCBI Accession:	NM_005536 , NP_005527
UniProt:	P29218

Application Details

Application Notes:	Optimal working dilutions should be determined experimentally by the investigator.
Comment:	Antigen size: 277 AA
Restrictions:	For Research Use only

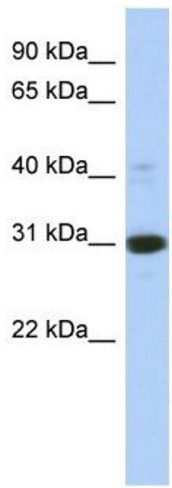
Handling

Format:	Liquid
Concentration:	Lot specific
Buffer:	Liquid. Purified antibody supplied in 1x PBS buffer with 0.09 % (w/v) sodium azide and 2 % sucrose.
Preservative:	Sodium azide
Precaution of Use:	This product contains Sodium azide: a POISONOUS AND HAZARDOUS SUBSTANCE which should be handled by trained staff only.
Handling Advice:	Avoid repeated freeze-thaw cycles.
Storage:	-20 °C

Handling

Storage Comment: For short term use, store at 2-8°C up to 1 week. For long term storage, store at -20°C in small aliquots to prevent freeze-thaw cycles.

Images



Western Blotting

Image 1. WB Suggested Anti-IMPA1 Antibody Titration: 0.2-1 ug/ml ELISA Titer: 1:1562500 Positive Control: Human heart